

AUTOHOME®

WORLD LEADERS IN ADVENTURE EQUIPMENT

PH. PATRICK GALBERT

50 YEARS OF ADVENTURE



MAGGIOLINA



AIR TOP



COLUMBUS



AIR CAMPING



OVERLAND



OVERZONE



OVERCAMP

enjoy your freedom





02	Index
04	The history
06	Welcome to the world Autohome
08	Comfort without compromise
10	Maggiolina Carbon Fiber
12	Maggiolina Airlander
14	Maggiolina Extreme
16	Maggiolina Extreme Forest
20	Maggiolina Grand Tour
22	Maggiolina Safari
24	Maggiolina Technical
28	The deserved success
32	Air Top
34	Accessories Maggiolina – Airtop
38	Columbus
40	Columbus Technical
42	Columbus Variant
46	Columbus Carbon Fiber
48	Columbus Accessories
52	Air-Camping
58	Air-Camping Technical
66	Overland
68	Overland Technical
72	Overland Accessories
76	Overzone
78	Overcamp
80	Overcamp Technical
82	Overcamp Accessories
84	Universal System
86	Tested in the world
90	Autohome: series accessories, colors and technical data



Yesterday I found a few grains of sand in my old shoes.
The quiet immensity of the desert very often returns to me in my dreams, when millions of grains were my golden ocean...

Igor Janíček, photo-reporter

The Worlds First - dating back to 1958

The history.

For everyone, not only for those who turned travel and outdoor life into a passion, "Maggiolina" and "Air Camping" are an historical synonym for roof tents. An original Italian invention from 1958 (see historical information) the Autohome vehicle roof top tent has been the companion of adventurers, explorers and travellers around the world for well over fifty years. The extraordinary intuition of that time, based on the newly born mass car-tourism market, identified a sense of freedom and independence and offered the greatest possible luxury as the basis of its well deserved success in the world market.

Sleeping, ok. But how? And where?

An idea came forth: "... why not attach the tent on the roof of the car...?"

The following question was a natural response: yes, but how?

In mechanics there are countless solutions. It was just a case of understanding which one to adopt.

Between the end of 1957 and March 1959 there had been two innovative interpretations of the same idea: vertical lifting tent and the lateral hinged folding tent. Almost contemporary, the first one – even if just for a while – was the ancestor of the current "Maggiolina" (called "Autocampeggio Stogl" in its first version, from the name of its creator); patented between 1957 and 1958, only a few months before "Air Camping", the folding fabric roof tent by Giuseppe Dionisio (an inventor and designer also known as Gidion) who obtained the relevant patent in 1959.

Between the shell model and the folding fabric model there was no immediate competition, they were even lauched on the same stand at two exhibitions in 1959, first in Milan and then in Cuneo. Both "Maggiolina" and "Air Camping", as they were named, with their extraordinary ingenuity were a huge success at the time, thanks to technical innovations that remain almost unchanged throughout over 50 years of production, travel and history.

Despite the commercial aspect concerning ownership which followed, the "Air Camping" model – which was easier to manufacture in terms of build and production – gradually attracted the attention of the public, finally entering the myth of adventure and extreme camping thanks to the historic adventures of Nino Cirani. This innovative outdoor lifestyle accessory was then being built - under Italian manufacturing licence - in many different countries, including: Brazil, Canada, France, Germany, USA and Great Britain. At first, the roof tent represented an inexpensive alternative to independent travellers, however as time passed, they became an essential travel accessory, to such an extent that the manufacturing company of the time decided to create "Autohome", a brand created and manufactured in Italy that now includes seven styles of roof tents, "Maggiolina", "Air Top", "Columbus", "Overland", "Overzone", "Overcamp" and "Air Camping", with well over 50 models available to choose from, plus accessories to suit all requirements. Unequivocal equipment for adventure tourists, professionals and lovers of the great outdoors, Autohome is synonymous – today as in the past – with the adventurers who made history. Autohome is the history of roof tents.



Air-Camping roof tent on the Land Rover Aziza 1 of Nino Cirani. Milan – Singapore Rally, 1962.



Maggiolina roof tent on the roof of Fiat 125 sedan (late Sixties).





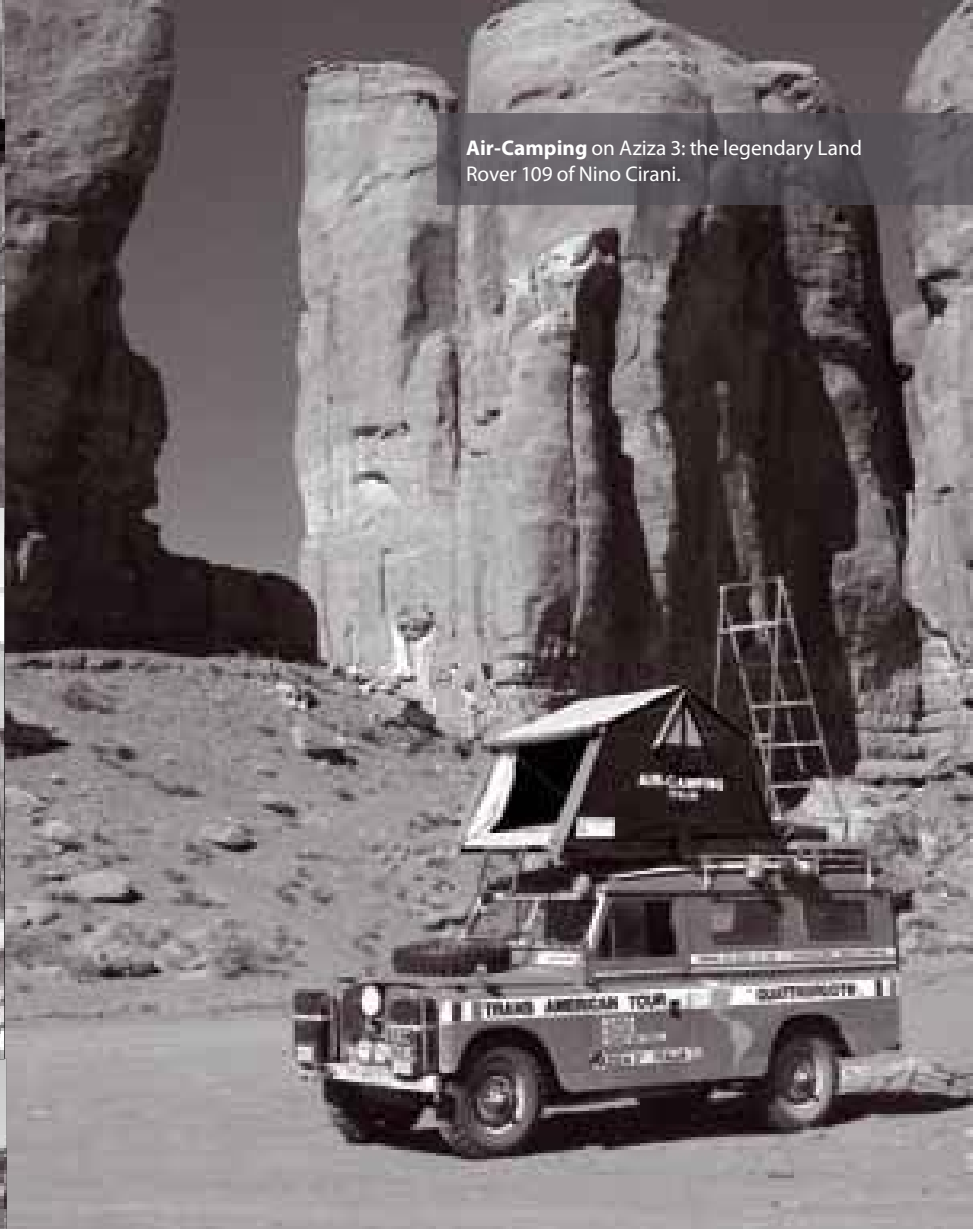
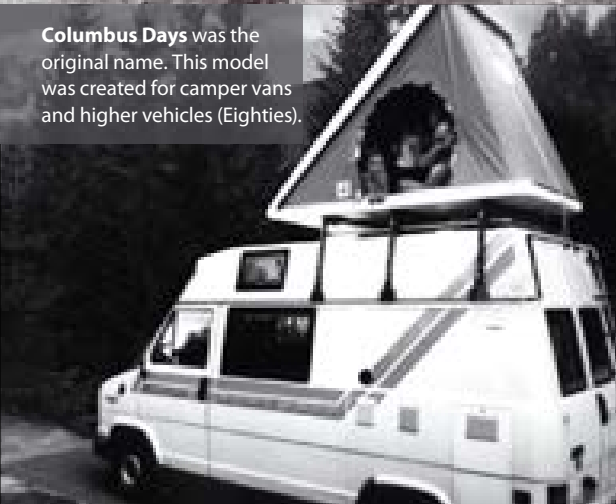
Air-camping on a small Fiat 500 Giardiniera (Sixties)



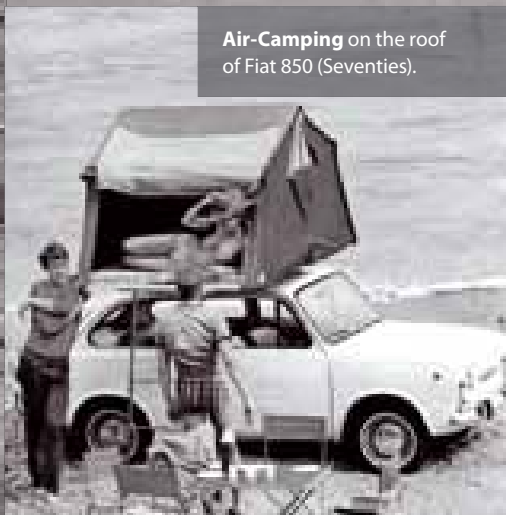
Maggolina with sunroof (Seventies).



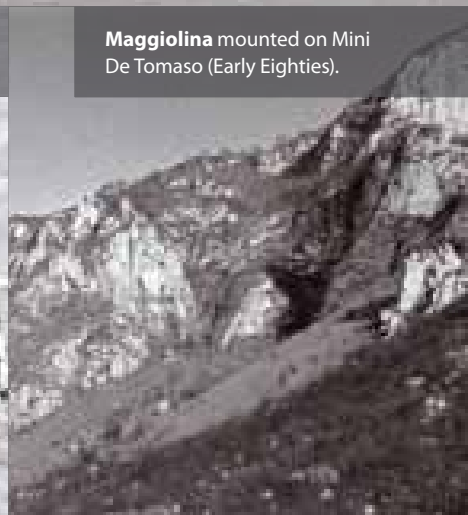
Columbus Days was the original name. This model was created for camper vans and higher vehicles (Eighties).



Air-Camping on Aziza 3: the legendary Land Rover 109 of Nino Cirani.



Air-Camping on the roof of Fiat 850 (Seventies).



Maggolina mounted on Mini De Tomaso (Early Eighties).



“My name’s Nino Cirani and I work as a photographer...”



WELCOME TO

Nino Cirani

Nino Cirani was born in Modena in 1926. Although he graduated in Architecture, he was renowned as a photographer, journalist, explorer and protagonist of car rallies around the world. Eating up thousands and thousands of miles, from the deserts of the Sahara to the forests of Amazon, in extreme and sometimes very dangerous conditions, he became a legend to all Land Rover drivers.

Throughout his journeys his travel companions varied, but there were two constants that never changed: his unstoppable Land Rover, named “Aziza”, and his Air-Camping tent. Thanks to the experiences and suggestions of Nino Cirani, the Car-Top Tent is now a state-of-the-art, ergonomic, comfortable and practically indestructible tent.

Today Autohome honours Nino Cirani with the tent that has been with him for 30 years, with the same colours and the same technical innovations adopted by the man who made it a legend.





THE WORLD OF AUTOHOME




EXPERIENCE
- GERMANY -
Official Supplier
of Land Rover Experience
Germany



AUTOHOME®

WORLD LEADERS IN ADVENTURE EQUIPMENT

Who said that adventures are uncomfortable?

When choosing an Autohome you will see a large range of models that are the result of almost fifty years of experience, tried and tested products, proven by their outstanding sales success.

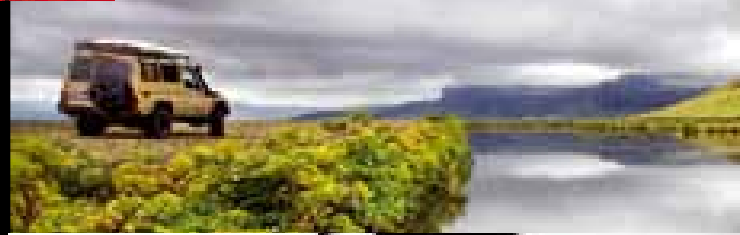
All Autohome products have undergone exhaustive testing in extreme conditions, from polar cold to torrid desert, from sand storms to unceasing tropical rains.

Autohome, the original vehicle roof top tents, with their technical and innovative features, are exported all over the world to satisfy the demands of the most demanding of travellers.

Quality is paramount in the construction, from the technical fabrics to the resins and metals of the shell, to ensure comfort and safety without compromise.

Autohome is not only a successful brand, but also a lifestyle, enabling people to enjoy the outdoors in a safe and comfortable way, whether it's on a small car for a family weekend or an a four wheel drive ready to explore off the beaten track.

Autohome is number one, not just on quantities sold and international distribution network, but also for its impressive model range with over thirty variations.



COMFORT WITH



AUTOHOME QUALITY CERTIFIED





WITHOUT COMPROMISE



Passport to freedom

When we think about “tour operators, all inclusive travel and travel offers” there are plenty of options to choose. If you really want to be free and independent by planning your holiday day by day, there is an option for you: Maggiolina.

Maggiolina is your passport to freedom, to unspoilt beauty, to far away destinations and away from it all.

Wherever you are, suitable for all types of cars, Maggiolina can be opened in seconds, offering you a comfortable snug bed with no need for floor support. It doesn't matter if the land is wet, muddy, rocky or asphalted you don't need to pitch your tent, because Maggiolina is on your car.

Maggiolina Carbon Fiber also has plenty of space for your travel accessories. Easy to pack away, you can leave any place at a moments notice.



SMALL

Art. MCF/01
Maggiolina Carbon Fiber Small, made of carbon fibre shells. Recommended for two adults.



MEDIUM

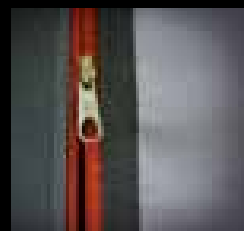
Art. MCF/02
Maggiolina Carbon Fiber Medium, made of carbon fibre shells. Recommended for two adults and a child.

Internal capacity of the shells:
Small about 196 l
Medium about 220 l

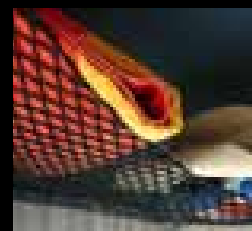
CARBON



2 doors closed with vertical zip fasteners.



Mosquito mesh windows and doors have a very small mesh constructed of a fine fibre glass.



Spacious roof mounted stowage net.



50
YEARS
OF EXPERIENCE

50 years of adventure

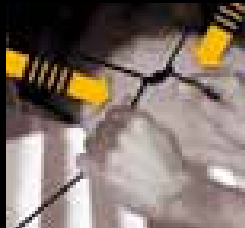
"The travelling bedroom: designed and built with passion, we hope you'll enjoy it, have a good journey!" – thus ran the advertising for the Maggiolina Roof Tents of old. Autohome celebrated the fiftieth anniversary of its historic model Maggiolina, with a special commemorative model, a worthy hi-tech homage to this incredible products extraordinary adventure – the Maggiolina Carbon Fiber "50th Anniversary" – this was the new challenge, "enjoy the future today!"



Entry and exit is made using either of the 2 doors with vertical zip fasteners. A second, additional, arc zip fastener is also fitted for partial door opening.



4 Removable pockets.



Elastic straps assist in folding the fabric when closing.



Osram® overhead light with 3 super bright Leds, including 3x1,5V batteries.



Aluminium ladder equipped with antiskid fastener and ladder storage bag.

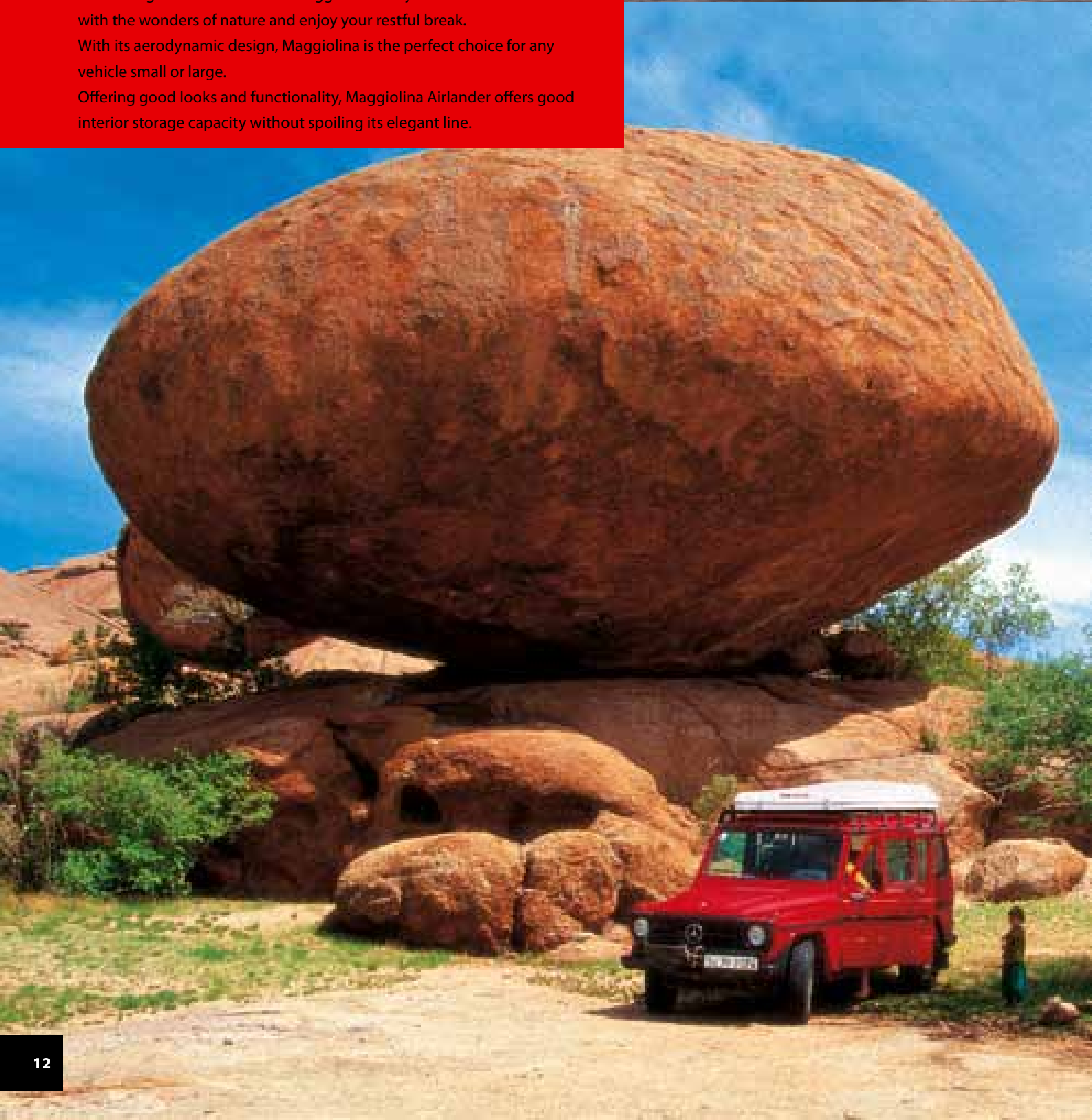
Adventure holidays

No more stressful searching around for accommodation. No more worries about finding a place to set up your tent before the night sets in. Pick Maggiolina and you are away!

Adventure holidays or weekend breaks away from the stress of everyday life. In the freedom of your car you can enjoy the comfortable, safe and welcoming accommodation of Maggiolina and you can remain in touch with the wonders of nature and enjoy your restful break.

With its aerodynamic design, Maggiolina is the perfect choice for any vehicle small or large.

Offering good looks and functionality, Maggiolina Airlander offers good interior storage capacity without spoiling its elegant line.





The aerodynamic design coupled with its ample storage capacity will allow you to safeguard all your overnight items, camping/travel accessories, sporting equipment and valuables from all weather conditions.

Internal capacity of the shells:
Small about 196 l - Medium about 220 l
Large about 260 l.



SMALL

Art. MB/09 - Maggiolina
 Airlander Blue Small
 Art. MG/09 - Maggiolina
 Airlander Gray Small

Aerodynamic version.
 Recommended for two adults.



MEDIUM

Art. MB/10 - Maggiolina
 Airlander Blue Medium
 Art. MG/10 - Maggiolina
 Airlander Gray Medium

Aerodynamic version.
 Recommended for two adults and a child.



LARGE

Art. MB/11 - Maggiolina
 Airlander Blue Large
 Art. MG/11 - Maggiolina
 Airlander Gray Large

Aerodynamic version.
 Recommended for two adults and two children.

BLUE

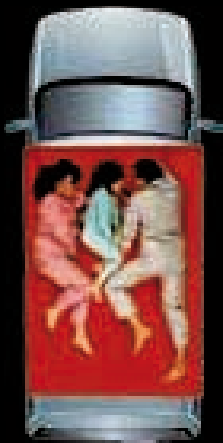
GRAY



The new series

The revolutionary Maggiolina Extreme is a product designed for all off road enthusiasts.

Built to the same high standards with new colours and more aerodynamic design, it incorporates a new style roof rack for all your sporting or essential travelling equipment making it ideal for weekend trips, holidays and adventures on and off roads the world over.



SMALL

Art. MC/05 - Maggiolina Extreme Carbon Small
Art. MG/05 - Maggiolina Extreme Gray Small

The exclusive model with roof rack attachment built into the top. Recommended for two adults.

MEDIUM

Art. MC/06 - Maggiolina Extreme Carbon Medium
Art. MG/06 - Maggiolina Extreme Gray Medium

The exclusive model with roof rack attachment built into the top. Recommended for two adults and a child.



With the special "C" shaped guides built into the top, you can fit specific roof racks to hold items such as canoes or surfboards without any additional attachments.

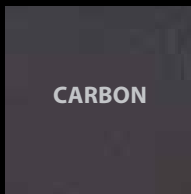


The special supplied bars are removable and adjustable according to the loads being carried. All large items (camping tables, chairs etc) can be perfectly stored on the roof whilst bed linen etc can be stored safely inside the outer shells.

**Internal capacity of the shells:
Small about 203 l - Medium about 228 l**



New Maggolina Extreme Black Storm
Exclusive Australian line. It's become part of the Autohome range.
Colours: Black Storm Shells and Carbon Colour fabric.



Hidden in the forest

The ideal model for those who want to merge with their environment: a variation of the Maggiolina Extreme, which can transport up to 25 kg of essential equipment on its' inbuilt roof rack. The non reflective shells, colour of the fabrics, internal furnishing and silent operation of the openings, are details that offer the bird watcher, hunter, naturalist or photographer discreet concealment.



The addition of arc zip fasteners allow partial opening of doors to allow the use of cameras and binoculars.



SMALL

Art. M/05F
Maggiolina Extreme Forest
Small: with inbuilt carrying rack on the outer shell roof. Recommended for 2 adults.



MEDIUM

Art. M/06F
Maggiolina Extreme Forest
Medium: with inbuilt carrying rack on the outer shell roof. Recommended for 2 adults + 1 child.



▲
The large carrying area, with its' easily adjustable bar system, is recessed into the outer of the shell roof, for transportation of light, bulky items such as, sporting equipment, camp chairs and tables.



FOREST







A new style

Beauty is a natural gift.

The all new Maggiolina Grand Tour brings into harmony radical design and construction techniques, which give off a certain energy through the new aerodynamic lines, enticing you to spend a few moments inside to discover the hidden quality and comfort of this new model.

Materials have been carefully selected for style, performance, reliability and a consistently accurate finish.

The Grand Tour range includes several models, to suit all needs.



CARBON

GRAY



SMALL

Art. MC/12: Maggiolina Grand Tour Carbon Small
Art. MG/12: Maggiolina Grand Tour Gray Small

Aerodynamic version with spacious interior. Recommended for 2 adults.

MEDIUM

Art. MC/13: Maggiolina Grand Tour Carbon Medium
Art. MG/13: Maggiolina Grand Tour Gray Medium

Aerodynamic version with spacious interior. Recommended for 2 adults + 1 child.

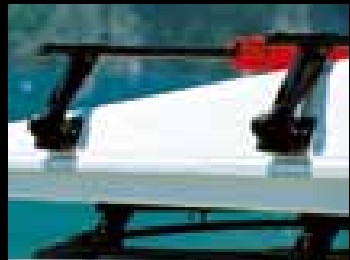
LARGE

Art. MC/14: Maggiolina Grand Tour Carbon Large
Art. MG/14: Maggiolina Grand Tour Gray Large

Aerodynamic version with spacious interior. Recommended for 2 adults + 2 children.



The convex shape of the shell roof, gives more than adequate storage of essential bedding and clothing.
Internal capacity of the shells:
 Small about 344 l - Medium about 378 l
 Large about 461 l



The small and medium Grand Tour models are configured for the 'Kit Fix' (Art. K/F on request) an exclusive method for carrying large or bulky items.

The real aspect of safari

The legendary tent has evolved, with a new rounder, more streamlined outer shell, but still retains the spacious inner storage area when the tent is closed.

The new model is easily recognizable by the colour impregnated outer shell and sand-coloured Dralon fabric: looking like the desert itself.

The renowned quality of the Maggiolina Safari remains unchanged, however even more technical features have been added.



SMALL

Art. M/15
Maggiolina Safari Small:
Aerodynamic version.
Recommended
for 2 adults.



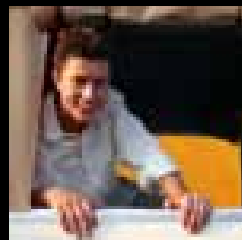
MEDIUM

Art. M/16
Maggiolina Safari Medium:
Aerodynamic version.
Recommended
for 2 adults + 1 child.

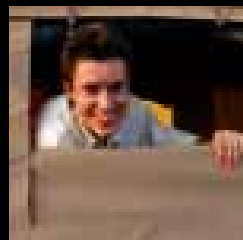


LARGE

Art. M/17
Maggiolina Safari Large:
aerodynamic version.
Recommended
for 2 adults + 2 children.



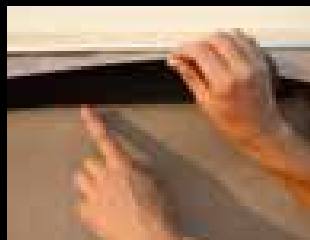
The tents are 2
doors as standard.



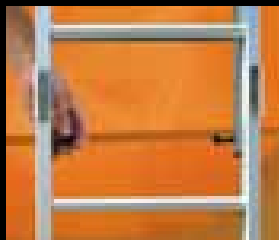
Entrances are fitted
with two way opening
doors, for variable
levels of ventilation
and privacy.

X-LONG - Optional for Small and Medium:
instead of the standard 210 cm long, this
version is available at 230 cm in length. The
X-Long version is suitable for longer length
cars, camper vans, RV's and 4x4's.

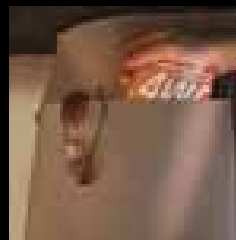




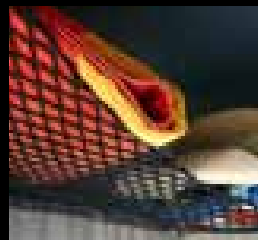
Ventilation is available through discreet vents in the closed doors.



Height adjustable alloy ladder, with spring loaded locking device supplied as standard. Ladder storage bag included.



Four removable pockets, two each side are included as standard.



Spacious roof mounted storage net.



Elastic straps assist in folding the fabric when closing.



TECHNICAL

MAGGIOLINA: Comfort is standard



By means of a simple handle it opens effortlessly under a minute. The reliable function is assured by a mechanism consisting of screw jacks linked by a chain drive system within the structure.



This opening system is reliable, lasts forever and needs no maintenance. It is operated by a removable handle. When the tent is open it will remain steady even in stormy weather conditions.



The handle is also an anti-theft device for your contents stored inside, as the shell cannot be opened without the handle.



Each Maggiolina has a overhead Osram® quality light (18x5 cm), with 3 super bright Leds, with pivotable reflector and easy to replace batteries. Roof is equipped with anti-condensation insulation.



The thick foam rubber mattress comes with 2, 3 or 4 pillows depending on model; an anti condensation insulation has been fitted under the mattress.



All tent models have 2 doors (one each side) and 2 windows (one each end). Each opening is equipped with zip fasteners and mosquito mesh screens.



Roll up, roll down mosquito net with two zip fasteners.

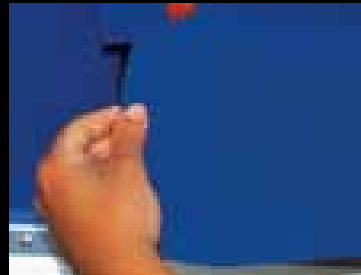
Maggiolina Extreme, Grand Tour and Safari incorporate clever ideas as standard.



Entry and exit is made using either of the 2 doors with vertical zip fasteners. A second, additional, arc zip fastener is also fitted for partial door opening giving privacy and ventilation which can help eliminate condensation.



Elastic straps assist in folding the fabric when closing.

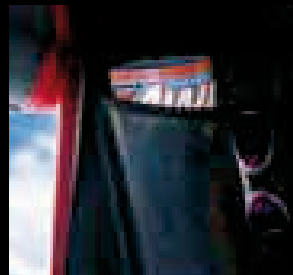


Maggiolina has three adjustable fasteners for total safety and protection. These fasteners are maintenance free, and remain unaffected by sand, dust, water or mud.

All tent models are equipped with two doors as standard, one each side, giving the user a choice for entry and exit as well as complete through ventilation of the tent.

Protection sheet fitted to the base of the door giving greater insulation and protection from dust, rain and cold.

The aluminium ladder has very small overall dimensions. The antiskid unit is normally supplied with the tent.



Ladder storage bag.

Stowage nets, useful for sleeping bags, towels and personal belongings.

Four removable pockets, two each side, fitted as standard.

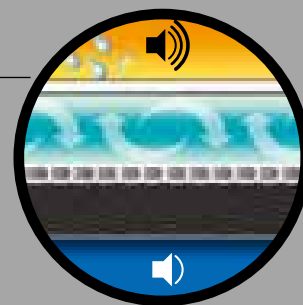
Grand Tour Small and Medium versions are configured for roof bars using 'Kit Fix' Art. K/F (not supplied) suitable for transporting sporting or camping equipment.

TECHNICAL

MAGGIOLINA: Bedrooms made to last

All particulars, from the design concept, materials and components, to the safety features and insulation, have been methodically chosen and thoroughly tested in order to obtain an all-weather proof product that can be depended upon at all times. Just like the structure of a boat, we have used fibreglass to prevent it from aging, discolouring or losing its shape.

Its remarkable capacity to withstand knocks and bumps can ensure durability but should the worst happen Maggiolina is easily repaired.



FIBERGLASS
ALVEOLAR PANEL
MOUSSE

Roof insulation with air gap is an exclusive Autohome feature. The air cushion obtained by the internal alveolar panel and the anti-condensation foam allow a better thermal and acoustic insulation and a healthier and more silent place to rest in case of rain.



The "sandwich" construction base has 25mm insulation thickness, while the two "C" shaped built in guides allow easy installation with any kind of roof cross bars (normally without any additional fixings) offering a steady and safe structure in order to withstand any off-road stresses.

Authentic Fiberglass

The shells are made with a technique which offers the best guarantees. A quality structure, compact and steady at the same time which cannot be compared with the common plastic material and similar products available in the market. The moulded polyester/fibreglass shell keeps the inside of the tent insulated from cold and hot weather; it can be easily cleaned with suitable detergent products.





High Quality Textile



We cannot control the weather, however we can build in features to ensure your comfort is assured in extremes of climate.

Autohome use Dralon®

from Bayer Textiles. Dralon is completely waterproof, windproof and breathable. Dralon will insulate campers/occupants from heat and cold and will eliminate external light, allowing you a good nights sleep.

Our textiles satisfy the quality standards of the highest category of products. Our textiles comply with the following standards:

- UNI EN ISO 9237/97
- UNI EN 24920/93
- ISO 105B04
- ISO3801

The extraordinary tests on our yarns and seams (UNI EN ISO 13935-2/01) have also evidenced their unquestionable efficiency and absolute reliability. Our laboratory activities have been recently accredited by SINAL (The Accreditation Body supported by the Italian Ministry of Trade and Industry guaranteeing to test users the competence and impartiality of laboratories in performance of accredited tests). This certification ensures the test reliability as well as the impartiality of service.

The advantages of Dralon:



Breathable: Dralon does not retain heat or humidity that form condensation, making it particularly resistant to mildew.



Temperature: The fabric is guaranteed for use in extremes of temperature, ranging from -30° C up to 70° C.



Waterproof: Waterproofing treatment is necessary because the fibres shed, not retain water, allowing you to fold the tents even when wet.



Maintenance: Construction of Dralons' special/unique fabrics ensures a long maintenance free life.



Stability: Dralon fibres are pre-dyed before the fabric is woven, making it fade resistant, even under burning desert sun.



The high quality of Dralon: Fabrics ensure the tents are more soundproof and less transparent against light than traditional materials, yet still feel soft to the touch.



Strength: Strong weft fibres help create a tear and crease resistant fabric, that will not shrink or expand even in extreme temperature fluctuations.



Easy to maintain: No need of particular treatments.



When you are miles away from home – in the desert or jungle, when you are having to endure the harshest of conditions in the most inhospitable places, the success of an expedition depends not only on the ability and skills of the explorer but also on the equipment used.

Maggiolina will always offer you comfortable and safe accommodation. Lifted off the ground it is safe from nasty surprises!

Those who have tried Maggiolina on their car roof no longer consider any other way of sleeping. The numerous users of all nationalities taking Maggiolina on their travels prove this. Listing all the journeys and expeditions where Maggiolina has played a key and successful role is simply impossible. We can only say that Maggiolina is an ideal companion to share your exciting adventures.



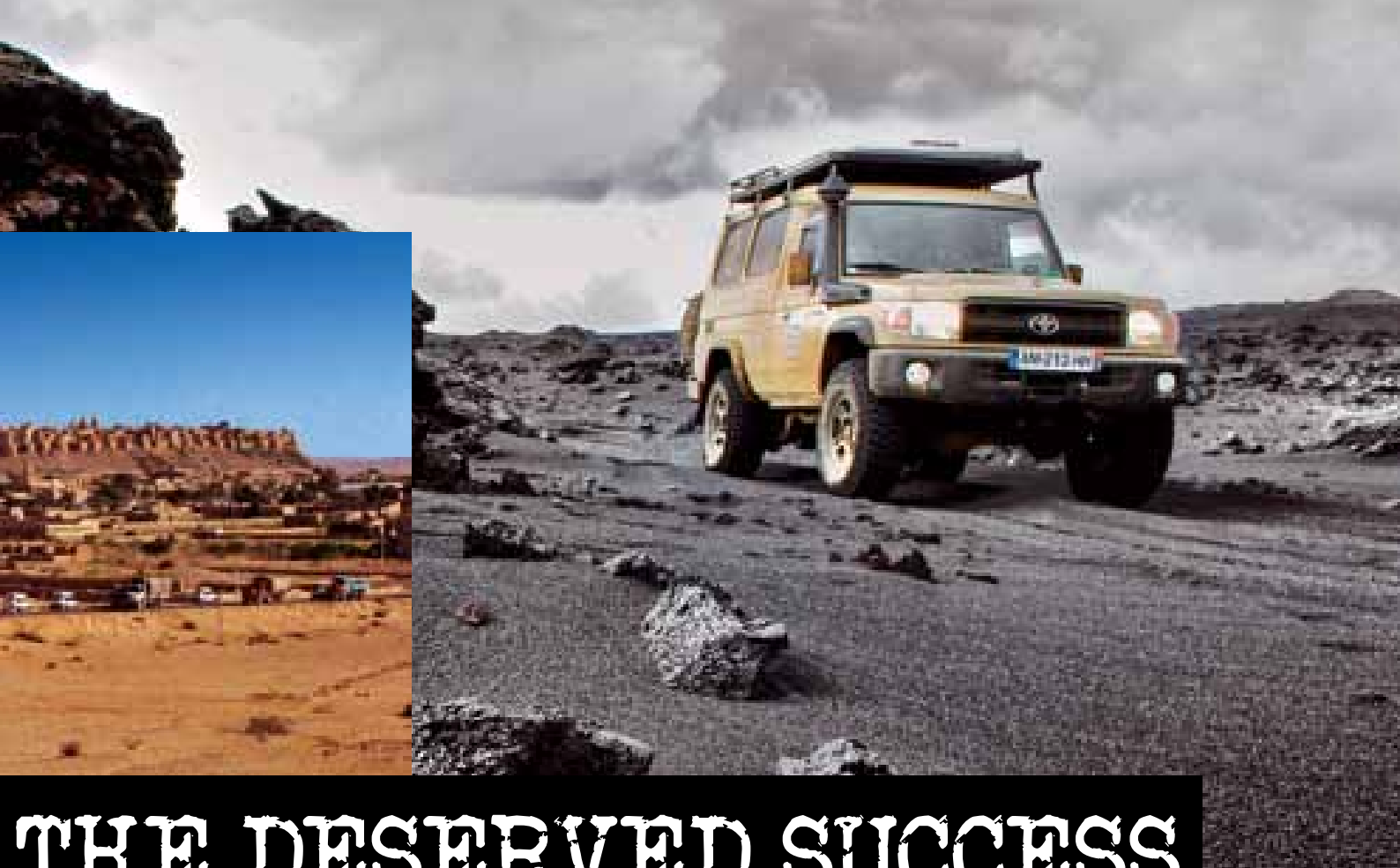
MAGGIOLINA:



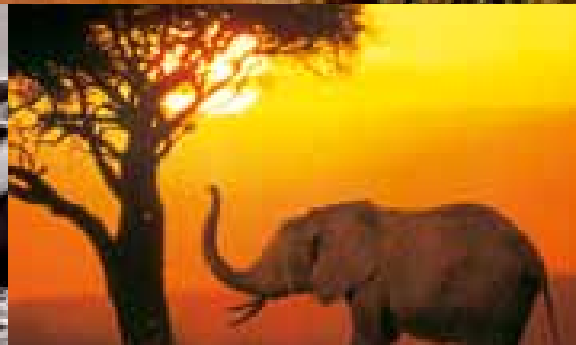
The Paris-Dakar

Another exciting adventure for the Swiss Team. A convoy of 25 vehicles equipped with Maggiolina Adventure Roof Top Tents.





THE DESERVED SUCCESS







AIRTOP

The Cross-Over Roof Tent.

A new body style for a new opening system: A combination of the Maggiolina design and Columbus gas strut opening system makes the AirTop model, the first shell tent with great accommodation and incomparably quick opening system.

AirTop incorporates all the great features of the traditional Maggiolina series with even more comfort and space. To open simply remove the safety hooks and the tent opens instantaneously! Extreme Adventure with Extreme Comfort!



NEW!

The new opening system consists of four gas-operated lifting struts, activated automatically when the external safety catches are released.



SMALL

Art. ATC/01 - AirTop Carbon Small
 Art. ATS/01 - AirTop Safari Small
 Art. ATB/01 - AirTop Black Storm Small

Recommended for 2 adults.



MEDIUM

Art. ATC/02 - AirTop Carbon Medium
 Art. ATS/02 - AirTop Safari Medium
 Art. ATB/02 - AirTop Black Storm Medium

Recommended for 2 adults + 1 child.



Standard Equipment includes: 3 doors (1 each side and 1 on the rear of the tent). All have mosquito netting and covers against wind or rain.



Standard Equipment includes: 2 arched windows with mosquito netting for ventilation and reduction of condensation. Arched zips on the windows with rain covers.

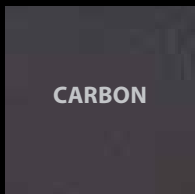
Automatic, Quick and Instantaneous opening system.

Once the latches have been unlocked (1 on the back and 2 on the front), AirTop opens by means of 4 gas-struts.

1

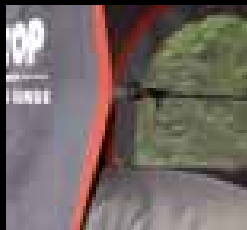
2

3



High Quality Textile

The fabric used is fully waterproof and breathable Dralon, quality tested according to UNI EN ISO regulations with SINAL certification.



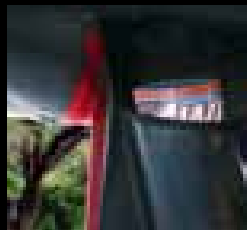
As standard: internal elastics straps to help folding of the fabric when closing the tent.



Closing: simple, adjustable Rally-Race style locking straps.



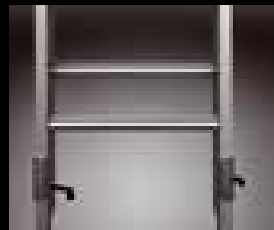
Spacious roof mounted stowage net.



4 Removable Pockets.



Osram® overhead light with 3 super bright Leds, including 3x1,5V batteries.



Height adjustable locking aluminium ladder.

Serie esclusiva AirTop Black Storm

Black Storm model has the same internal features as the standard AirTop but comes with a combination of Carbon Colour Fabric and Black Colour Impregnated GRP shell.



ACCESSORIES

A complete range of matching accessories for a comfortable stay.



AL



Verandah (for cars)
Art. M/05A - cm 200x160x h 240

Quick and easy to assemble it protects you from inclement weather conditions. Provides a spacious sheltered area for cooking, eating, sleeping or storing your essential holiday equipment. An extremely popular, independent structure allowing you to drive away leaving your equipment well protected. The framework is constructed from round anodised aluminium poles.



AL



Changing Room (for cars) Art. M/12A - cm 140x170x h 170
Changing Room 4x4 (for vans and 4 wheel drives) Art. M/13A - cm 140x170x h 220

The Changing Room offers high level of privacy and protection. A supplementary, enclosed room that can be closed on all four sides by means of zippered panels. Adjustable Aluminium Poles, provide a quick and easy connection to Maggiolina Roof Tents. The framework consists of round anodised aluminium poles.





Feet (Art. M/09A)
 Four strong feet allows you to place Maggiolina on the floor if desired. Measuring 25 cm high a safe distance from floor humidity, water, insects, stones etc. Foldable and clutter free they can be installed in any desired position.



Anodised Aluminium Poles



Solar reflective and Winter hood (Art. M/10A)
 Made of resin bonded nylon fibre and aluminium powder. Excellent protection from the burning effect of the sun's rays, and equally useful for extra insulation in colder conditions. Quickly attached, by Velcro strips, and removed, it can also provide additional protection in the most extreme of conditions. Can be left in situ when closing the tent.

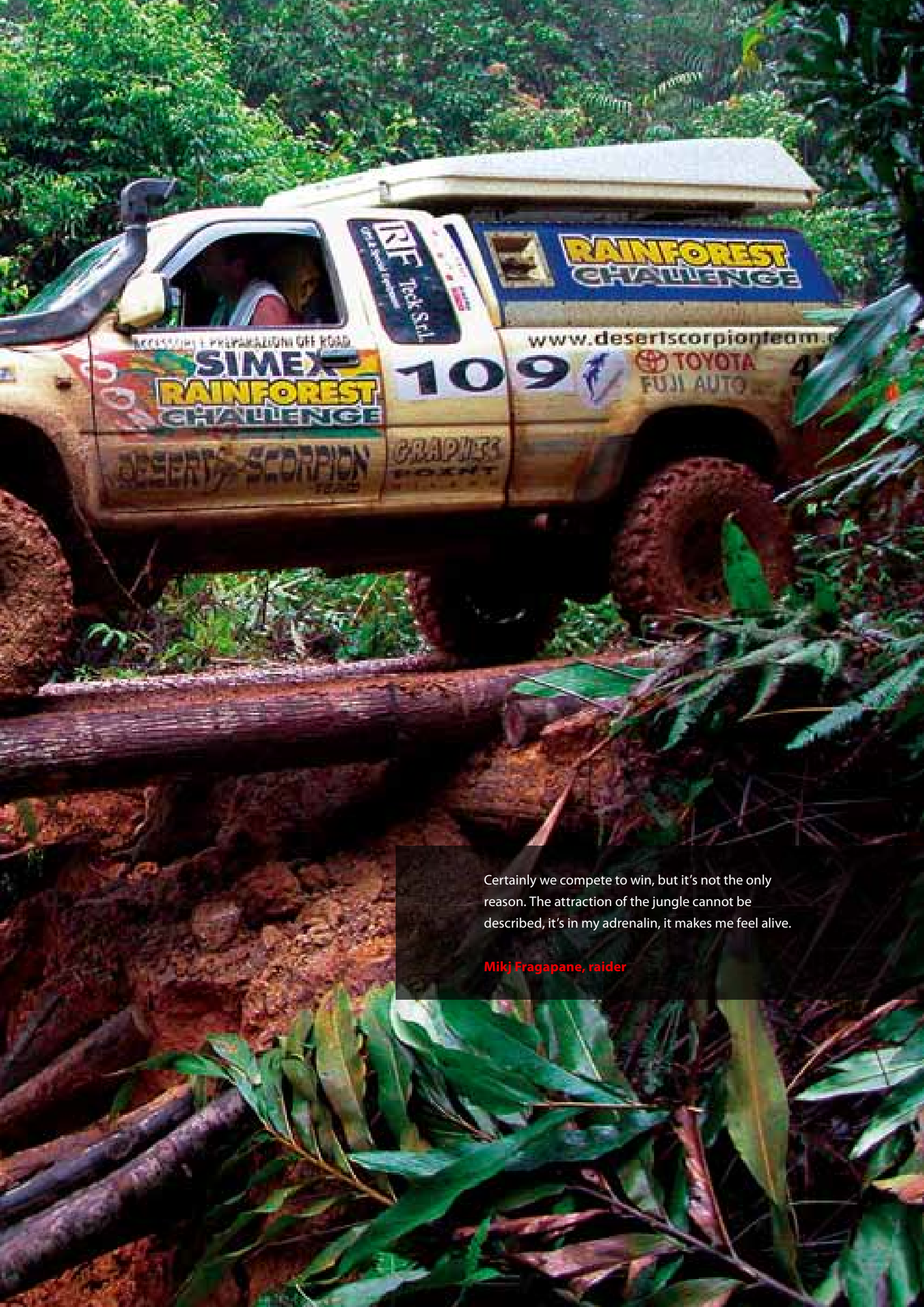


Awning (Art. M/11A)
 A quick protection from sun and rain. The framework consists of round anodised aluminium poles. It measure 200x160 cm.



The Awning, with or without the Change room can be attached to either side of the roof tent.



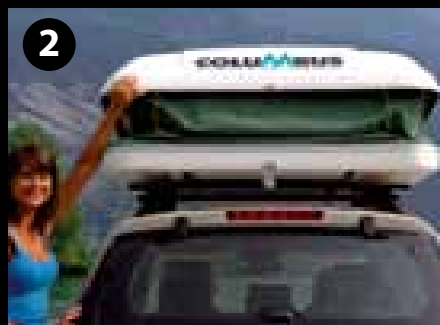


Certainly we compete to win, but it's not the only reason. The attraction of the jungle cannot be described, it's in my adrenalin, it makes me feel alive.

Mikj Fragapane, raider

Fun and Excitement guaranteed

A sense of freedom, adventure and truly independent spirit at first glance. Columbus for a weekend away, holiday or for that more adventurous trip. Its exceptional line is a design masterpiece; every detail has been carefully and skilfully designed to produce an innovative and stylish design. Everything from the design concepts, materials and components used, to the safety features and insulation, has been methodically chosen and thoroughly tested in order to attain a lasting and complete weatherproof product. Opening the tent is really quick and easy, thanks to the special gas struts, which lift up the top whilst keeping the fabric properly tensioned. Columbus – your essential travel partner.



All Columbus models open in an instant. By releasing the catch at the back, the tent will open thanks to two special gas springs (just like those on car tailgates) which lift the top whilst keeping the fabric tensioned.



Closing it is just as simple; you are then ready to set off again in total safety.

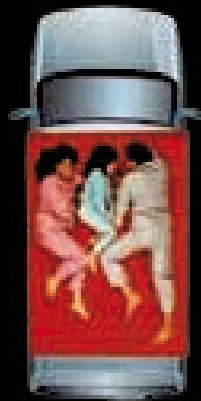


Internal capacity of the shells:
Small about 196 l
Medium about 220 l
Large about 260 l



SMALL

Art. C/01
 Columbus Small:
 aerodynamic version.
 Recommended for two
 adults.



MEDIUM

Art. C/02
 Columbus Medium:
 aerodynamic version.
 Recommended for two
 adults and a child.



LARGE

Art. C/03
 Columbus Large:
 aerodynamic version.
 Recommended for two
 adults and two children.

**WILD
 GREEN**



PH. PATRICK CALIBERT

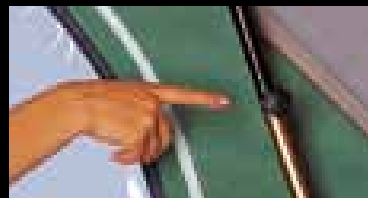
TECHNICAL

Probably the tallest around.

For a car roof top tent, Columbus is one of the best not just for its interior height of 150 cm but its many other features.



Columbus provides extra storage area whilst travelling. The aerodynamic design with its ample storage capacity allows you to carry sporting equipment, travel accessories, bed linen, etc and keep them safeguarded from the weather.



Two internal safety locks to prevent closure during gusts of wind are fitted as standard (when locks are inserted, the tent does not close).



Available with: 2 roomy storage pockets, one per side.



Arched door fitted on each side complete with roll up, roll down mosquito nets. Fitted with circular zips, they can easily be changed into windows.



Large model is usually equipped of a standard opening on the back with dimming device (cm 90 x 90); the opening is protected by a mosquito net, allowing the access to back side and more ventilation at the same time.

1/2 - The entire outer structure is made of polyester and fibreglass, which makes it all weather resistant and prevents it from ageing, discolouring or losing shape. It can also be easily repaired, avoiding the cost of replacing the whole shell.

3 - Airtex fabric. Waterproof, tear resistant and mould-proof. Anti-condensation. It has a high degree of water vapour transpiration, can be folded even when wet and does not absorb water.

4 - Two arched openings fitted with a water diversion system to stop water seeping through and with fine mesh mosquito net.

5 - Fastener with adjustable hook and padlock ring.

6 - **NEW!** - Aluminium ladder with spring locking height adjustment.

7 - **NEW!** - Roof insulation with air gap and the anti-condensation foam allow

a better thermal and acoustic insulation in case of rain.

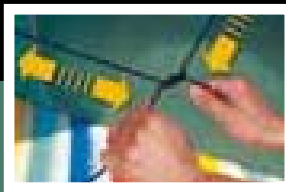
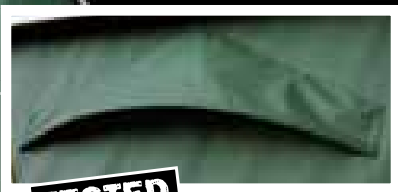
8 - Mattress and pillows. The mattress has anti-condensation insulation underneath.

9 - Two strong "C" shaped guides built into the fibreglass to adjust fitting on any vehicle.



Easy to open, simple to close

Elastic tensioning straps inside the tent help to fold the fabric into place when closing the shell, particularly useful on high vehicles.



TESTED



AIR CAP
CLIMATE

NEW!

The Air Cap is positioned at the highest point of the tent, in order to ventilate the tent which can help eliminate condensation.



Giving a look at the world

A variation of the classic model, available in Gray, Safari or Wild Green Airtex fabric, and characterised by the versatility of the windows and doors. The large rear opening can be adjusted to suit personal preferences according to climate and conditions, without compromising privacy, allowing you to really enjoy the great outdoors.



SMALL

Art. CVG/01 - CVS/01
CVW/01
Columbus Small:
aerodynamic version.
Recommended for two
adults.



MEDIUM

Art. CVG/02 - CVS/02
CVW/02
Columbus Medium:
aerodynamic version.
Recommended for two
adults and a child.



LARGE

Art. CVG/03 - CVS/03
CVW/03
Columbus Large:
aerodynamic version.
Recommended for two
adults and two children.

GRAY

SAFARI

WILD
GREEN

X-LONG - Optional for Small and Medium: instead of the standard 210 cm long, this version is available at 230 cm in length. The X-Long version is suitable for longer length cars, camper vans, RV's and 4x4's.

6 different kinds of big back opening.



Example 1
100% open.



Example 2
100% opening with
mosquito netting
closed.



Example 3
50% door upper
opened with mosquito
netting closed, giving
50% darkening and
privacy inside the tent.



Example 4
50% lower section
of door opened, with
mosquito netting
closed.



Example 5
20% upper door
opened with
mosquito netting
closed giving 80%
darkening and
privacy inside the
tent.



Example 6
Opening 100%
protected by second,
outer door.
Fixed window that can
be closed from inside
the tent.



TESTED



NEW! The Air cap is positioned at the highest point of the tent, in order to ventilate the tent which can help eliminate condensation.

Columbus Variant incorporates clever ideas as standard.



Full rear opening. The lower section of the outer door can be held in place with an elastic cord, two vertical zippers and one horizontal elastic cord, ensure the outer door is kept secure even in adverse weather conditions.



Adjustable height alloy ladder with automatic locking device. Ladder bag included.



Stowage nets, useful for sleeping bags, towels and personal belongings.




The small and medium version is configured for roof bars using 'Kit Fix' Art. K/F (not supplied) suitable for transporting sporting or camping equipment. The model Columbus Variant Small and Medium X-Long is not equipped for the application of Kit Fix.



Osram® overhead light with 3 super bright Leds, including 3x1,5V batteries.





Even though we were hungry and thirsty
we would never stop until the sun set.
If you've never slept in the desert you
wouldn't understand.

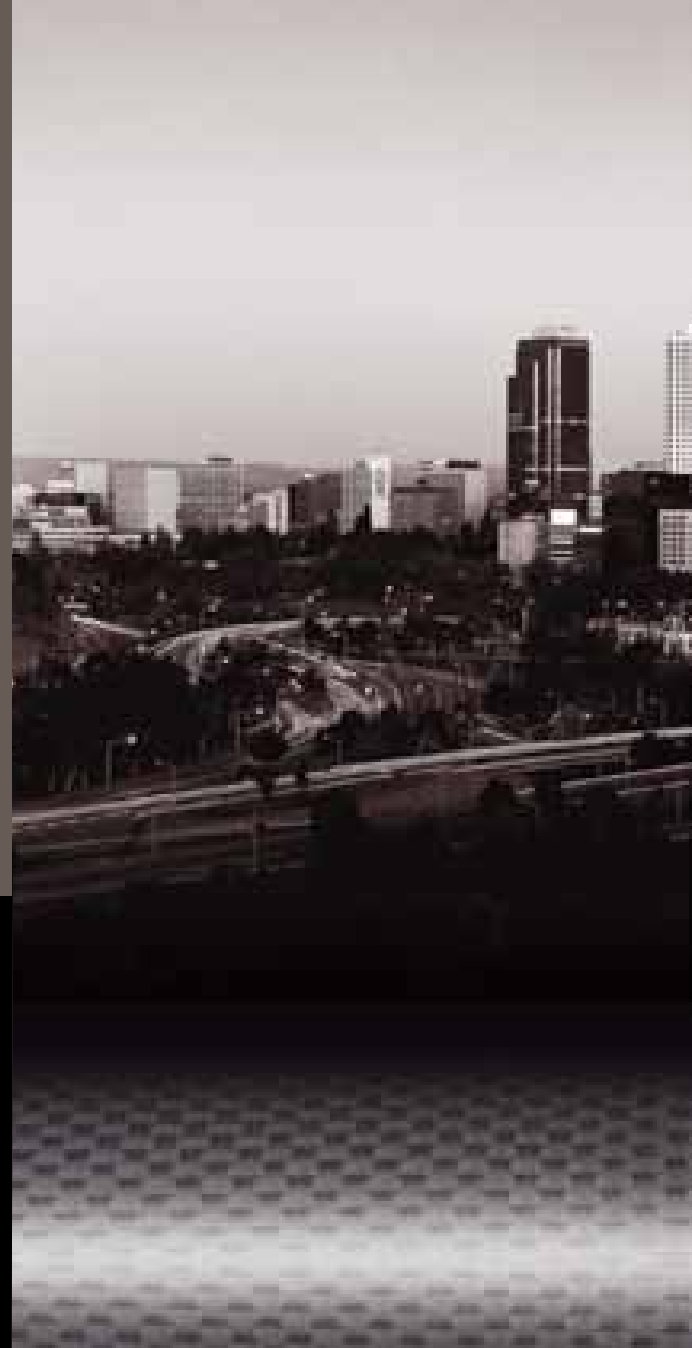
Giulio Ielardi, photo-reporter

Take your adventures to new heights!

Exploring the unknown! Columbus Carbon Fiber is the leading tent of its kind in the world. Its' unique technical features make it absolutely unique.

The new Columbus Carbon Fiber has a weight saving of some 20% over the conventional models, whilst the general features are similar to the Columbus Variant models the Carbon Fiber outer shell has strength properties similar to steel.

The Columbus Carbon Fiber is the most technologically advanced roof tent in the world, enjoy the future!



CARBON



SMALL

Art. CCF/01
Columbus Carbon Fiber
Small: aerodynamic version, recommended for two adults.

MEDIUM

Art. CCF/02
Columbus Carbon Fiber
Medium: aerodynamic version, recommended for two adults and a child.

Features of the tent include: 2 inner side pockets, roof mounted inner cargo net, anti-condensation Air Cap, ladder storage bag, height adjustable alloy ladder, removable inner 'cross over' elastic cords, to simplify closing the tent, hydraulic struts for ease of opening with locking mechanism in the opened position, 2 arched side doors with full mosquito mesh, Osram overhead light and two overlapping rear doors that have a variable opening system for privacy and ventilation.



As in all Columbus models there is ample storage space for bedding, (such as sleeping bags, duvets, blankets and pillows)



TESTED



NEW!
Air Cap Climate

ACCESSORIES

A great choice of accessories

A vast range of accessories are offered for your maximum comfort and additional needs. They are extremely easy and quick to assemble and self-contained. Each of the Columbus models can be supplied with any of the following accessories:

- **Verandah** – being self-contained, it allows you to move your car whenever desired.
- **Winter hood** – additional protection against humidity, cold and wind.
- **Awning** – a useful accessory for short breaks.
- **Feet** – to place Columbus on the floor if desired.

Other accessories: roof rack for any kind of vehicle; space saving kit designed to store your AUTOHOME on your garage ceiling, bike rack etc.



Self-contained Verandah

(Art. C/03A)

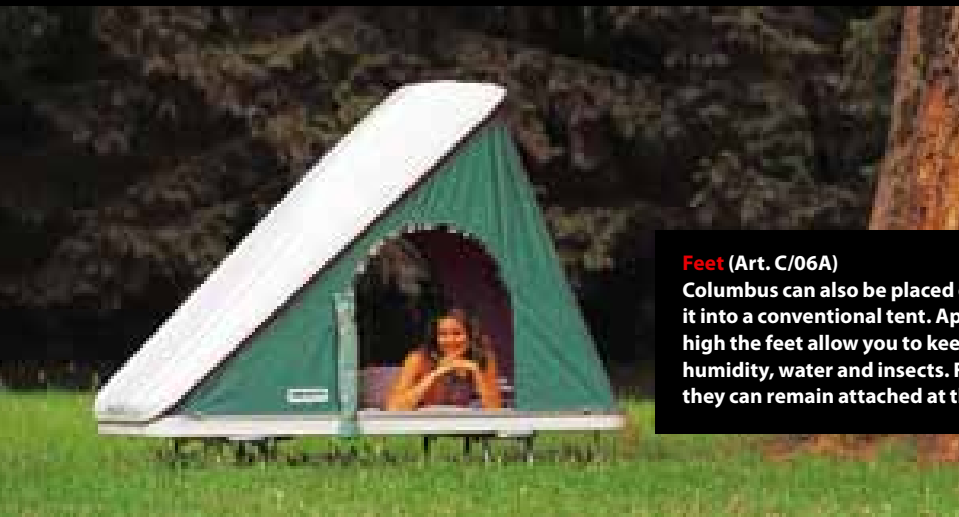
Self-contained Verandah

(200 x 210 x 245 cm high approx).

Fitted with openings on all sides, it is very versatile and useful.

Plenty of space for storage, cooking, eating and additional sleeping area.

Awning (Art. C/05A) Awning (roof 200 x 160 cm). Quick and easy to assemble, it provides shade from the sun and an ideal cooking/eating area.



Feet (Art. C/06A) Columbus can also be placed on the floor, transferring it into a conventional tent. Approximately 25 cm high the feet allow you to keep a safe distance from humidity, water and insects. Foldable and clutter free, they can remain attached at the base while in transit.



Winter hood (Art. C/04A) The Winter hood is extremely easy to use thanks to the Velcro fastening. One half is attached under the Columbus roof, the other half on the Winter hood. The Winter hood can be attached and remain in situ, whilst travelling.





Finally the role of protagonist on the stage of nature, with no one here to applaud it.

Patrick Galibert – Professional photographer

AIR-CAMPING

It was 1964 and, like every year, I was exhibiting the Air-Camping tent at the Fair of Milan, when a person appeared in front of me: « ... My name is Nino Cirani and I work as a photographer and journalist: I am organizing a journey with my Land Rover and another Land Rover driven by some friends of mine. We need to cross the entire continent of Africa, first northwards, from Cape Town to Cairo, and then, west, across North Africa to Morocco, we will then drive back to Italy through Spain and France. I have a taste for perfection, and would like my tent to be suitable for photographic purposes. I would also like to receive any updates, as our journey will be very demanding... ».

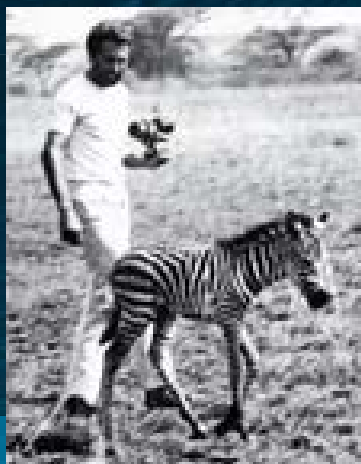
An irrepressible joy was flashing in the eyes of this young man. I immediately understood that he was not looking for a simple tent, but for equipment to achieve a big dream.

Dr. Giuseppe Dionisio

Inventor and maker of the Air-Camping tent



STATISTICS OF A LE



Nino Cirani, Tanzania 1964

**30 years of extreme car rallies
on all five continents;
500.000 km of roads, tracks
and cross-country trails;
2.000 nights inside the
Air-Camping tent.**



GEND



MAIN CAR RALLIES PARTICIPATED IN BY NINO CIRANI

YEAR	DESTINATION	LENGTH	KM
1959	MILAN - NORTH CAPE Across 10 countries	3 months	24.000
1962	ITALY - SINGAPORE Across 13 countries	5 months	31.000
1963	ITALY - former USSR Across 7 countries	3 months	22.000
1964	JOURNEY ACROSS AFRICA 1 st Italian crossing - Across 17 countries	9 months	53.000
1968	ALASKA - LAND OF FIRE 1 st Italian crossing and record of length - Across 18 countries	11 months	103.000
1972	1 st SAHARA EXPLORATION Across 8 countries	3 months	25.000
1973	2 nd SAHARA EXPLORATION Across 9 countries	4 months	32.000
1974	3 rd SAHARA EXPLORATION 1 st Italian crossing of the Great Erg of Bilma - Across 7 countries	3 months	26.000
1975	ITALY - CEYLON Across 9 countries	9 months	52.000
1976	4 th SAHARA EXPLORATION 1 st World crossing from Fachi to Termit Mountains - Across 6 countries	3 months	30.000
1977	JOURNEY ACROSS AFRICA Across 25 countries	12 months	55.000
1978	AUSTRALIA - NEW ZEALAND	9 months	45.000
1979	5 th SAHARA EXPLORATION	3 months	24.000
1980	NORTH CAPE AND ICELAND	4 months	25.000

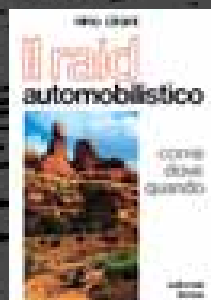
“The big dazzling open space: the Desert, where the wind sometimes blows so hard that, mixed with sand, it succeeds in grinding the windscreens of cars”.



Where the sand dunes with their marvellous squiggles disappear beyond the horizon, under a hopeless and merciless sun, that hard, demanding nature, where everything is strictly motionless and essential, made me feel perfectly at ease, as if I was born and had always lived there.

Everything could be found in “Aziza”: Tools, cooking utensils, additional fuel tanks, a small fridge (to preserve photographic films), one hatchet, one pickaxe and one shovel. Also one machete, one rifle and one hand gun.

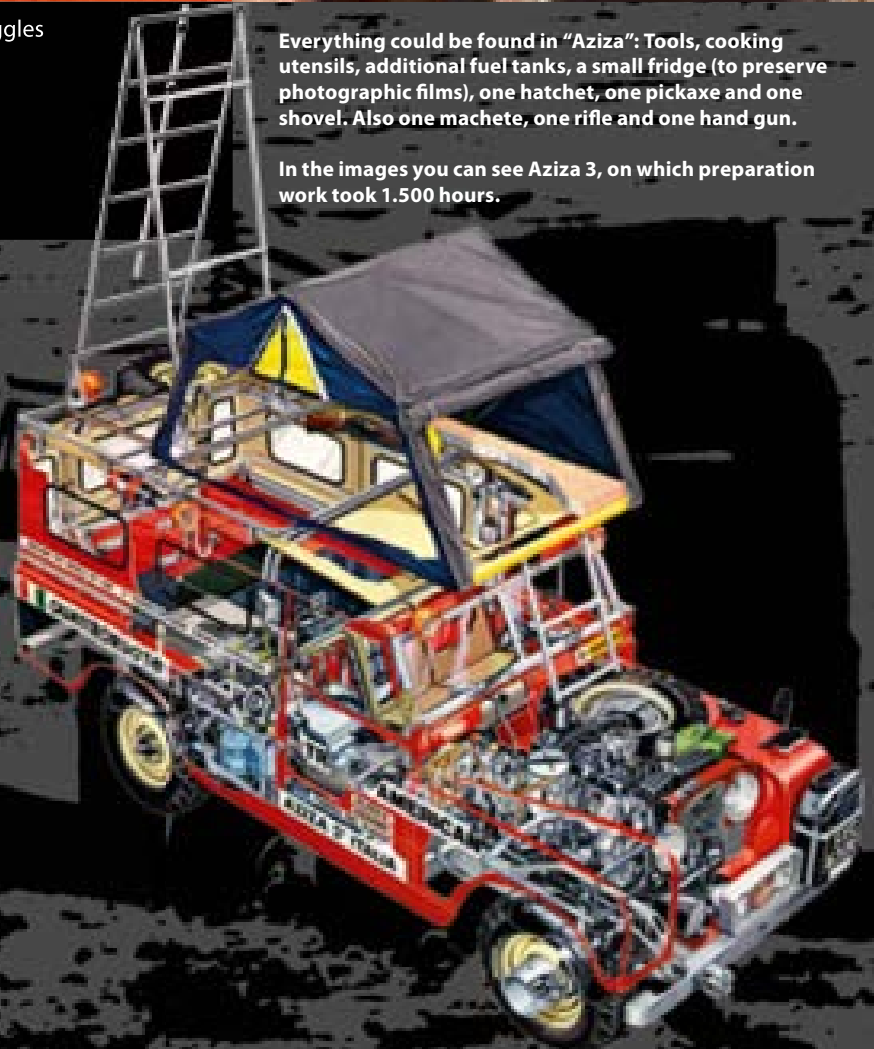
In the images you can see Aziza 3, on which preparation work took 1.500 hours.



Nino Cirani published several photojournalist reports in the most prestigious magazines. In 1973, he published his experiences “The Car Rally; How, Where, When” (Domus Publishers - “Il raid automobilistico. Come, dove, quando”) a handbook full of suggestions, explanations and drawings to prepare for an adventure raid in the best possible way.

The equipment was prepared with the utmost care: including his Land Rover, where all the mechanical components and tanks were protected by means of metal plates, fabricated and modified by himself in the machine shop of his friend Amedeo Gaiani in Milan.

In the book, Cirani describes at great length how he used to prepare his car and the equipment required for the expedition or rally: The roof tent is defined as decidedly better than any traditional product.



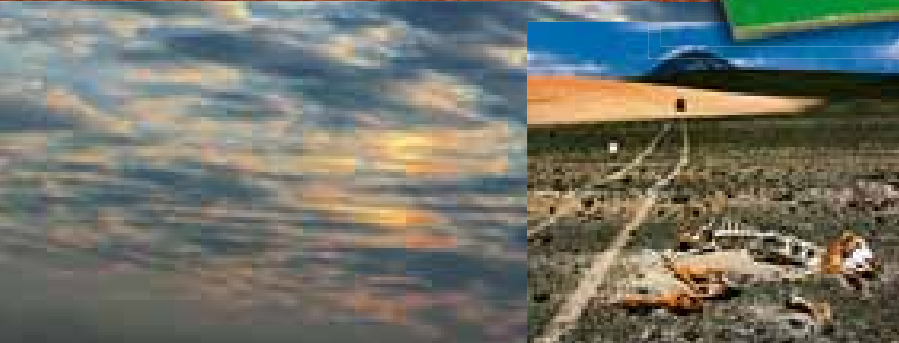
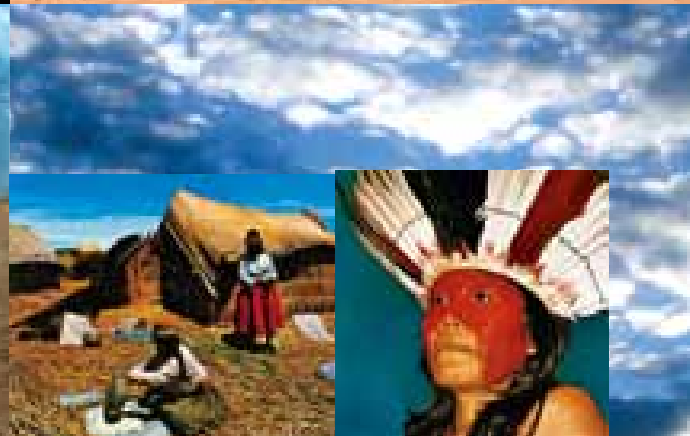
A sand storm caught us off our guard. We could no longer see anything and when, finally, the wind stopped blowing, we had to clear Aziza that was almost covered with sand. It had been a hard, very hard journey, but now, in my memory, it remains the most beautiful I have ever made.

One day, in the desert of Nubia, on the track to Abu Simbel, I crossed an enormous truck of the Egyptian army. The soldier, who was driving, looked and smiled at my Land Rover and said "aziza", which, in the Arab language, means "nice" and is an adjective used for young, handsome and attractive girls. In this way is born the series of Azizas.



“Here cross-country driving is completely impossible. For 34 days, we travelled on mule tracks at an altitude of 4.000 metres, always on the edge of the precipice. The smallest mistake would have been fatal”.

Alaska - Land of Fire: it is the longest route that one can make on the Earth. It is a ride from the extreme North to the extreme South, a journey across all the latitudes, from the ice of the Arctic to the ice of the Antarctic, through all the climates, from the arctic to the equator, across all altitudes, from 80 metres below sea level, in the Valley of Death to 5.000 metres in Peru and Bolivia. By force of zigzagging in and out the different countries, we had to undergo a good 64 customs checks. Also this, I think, is a record for a single journey.



Great Undertakings on a Reduced Scale

In 1970, the adventures of Nino Cirani aroused the interest of Mebetoy's, which reproduced Aziza on a 1:43 scale, equipping it not only with doors, bonnet and hatchback that could be opened, but also with all the relevant equipment fitted. On its roof, beside the additional spare wheel, there is the Air-Camping tent. The Land Rover of the "Trans-American Tour" is still in demand by customers today, and is available in the BBurago catalogue both on a 1:43 and on a 1:24 scale.



Nevertheless what we found in the hinterland re-paid us for the dangers, for the efforts, for the fords we crossed, and for getting stuck in the mud: Titicaca Lake, the Urus Indians on their floating islands, the Indians of the Andes in Peru, the very high mountains covered with ice, the huge expanse of the “puna” of Bolivia, empty and swept by the wind. And the colours of the Indians, the colours of the landscape and the colours of the wide skies.



TECHNICAL

Comfort always holds the first place.

FABRICS – The roof and sides are made of a heavy duty single skin 420g/m², 50% cotton and 50% acrylic fabric, which is water proof, breathable and rot-proof.

This fabric has several advantages: it's extremely breathable, so inside the tent is fresh and airy, unlike plastic-coated or resin-treated fabrics, which are non-breathable and therefore create lots of condensation, which is the main cause of moulds.

However the breathable nature of the fabric doesn't reduce its impermeability to rain: on contact with water, the fabric weave swells and thickens; where sewing has occurred, the holes created by the needles swell and seal as does the thread used for stitching, whereas in plastic-coated fabrics, some permeable holes will still remain.

YARNS – A widely used, high-technology yarn, made of two different fibres: pure cotton outside, to swell on contact with water and fill the holes made by the needle plus a synthetic fibre core is used on the inside of the yarn to obtain a high strength seam.

COLOURS – The colours used since 1959, are for very practical reasons, including reducing the amount of light filtering through, by using medium grey on the roofs and dark blue for the sides.

PLATFORM BOARDS – The boards used for the tent base are made of a poplar plywood, which, thanks to its long fibres, is very resilient and hard-wearing. This 12 mm thick plywood has been developed for this particular application; the different layers are bonded together by the cross-overlapping method, following the wood grain to produce the products unique features.

The Air-Camping procedure includes, veneering both outside and inside of the tent base, by applying two 0.3 mm thick Silver-Quartz CHPL (Casework with High Pressure Laminate Finish) laminated sheets. The plywood, therefore, has a double protection: it is waterproof and water-repellent both outside and inside, does not absorb humidity, will not warp and prevents the formation of harmful mould.

METAL COMPONENTS – Both steel and aluminium are used in a combination that achieves a tent with strength, high resistance to wear and the elements, yet still maintain a light overall weight. The metal elements used are first quality; being hot-galvanized during the mills' rolling process directly in the factory.

LADDER – Made of aluminium with steel stiffeners and extendable up to 2.30 metres. Quick release spring clips allow easy adjustment to the height of the ladder, and also keep it firmly locked in place on the tent base when in transit. With the tent in use, an automatic blocking mechanism prevents the ladder from slipping when being climbed, and allows for using the tent on uneven ground and smooth or slippery asphalts or pavements.

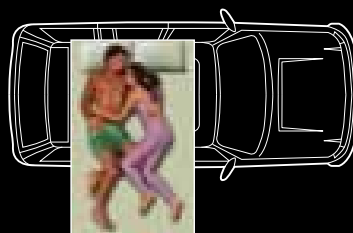
STANDARD SET-UP

Opening and entrance on the side of the vehicle. This configuration is available for all models.

AC/01 AIR CAMPING SMALL

Sleeps two adults

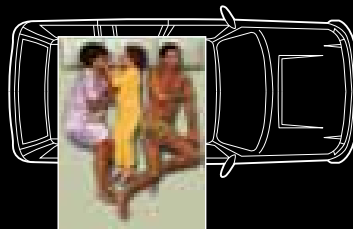
Sizes: 130 x 220 cm (when closed: 130 x 110 x h 30 cm)



AC/02 AIR CAMPING MEDIUM

Sleeps two adults + 1 child

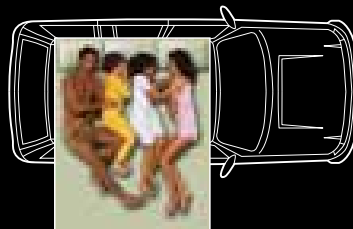
Sizes: 160 x 220 cm (when closed: 160 x 110 x h 30 cm)



AC/03 AIR CAMPING LARGE

Sleeps two adults + 2 children

Sizes: 180 x 220 cm (when closed: 180 x 110 x h 30 cm)

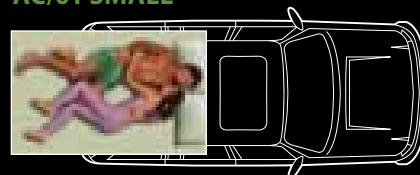


EXPLORER SET-UP

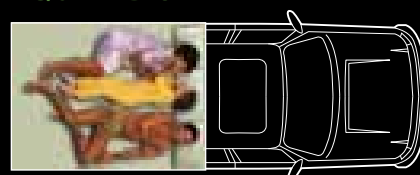
Set-up with opening and entrance on the rear of the vehicle. This configuration is particularly suitable for Land Rovers and 4x4s.

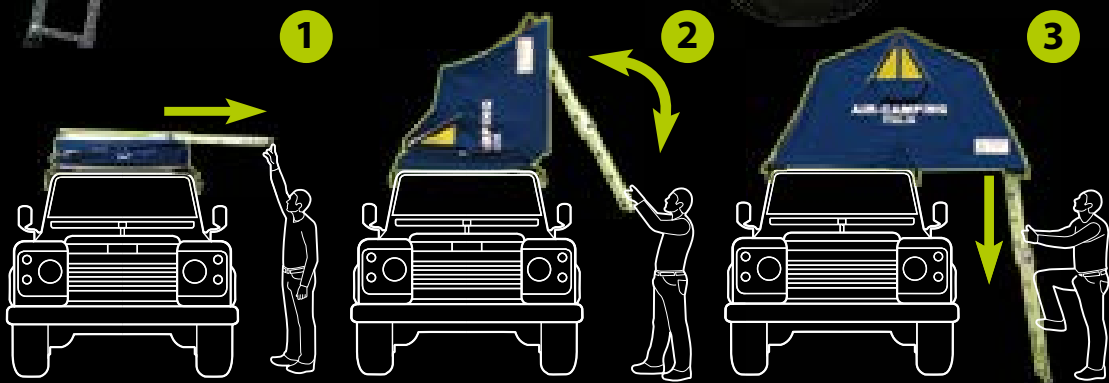
Option available for SMALL and MEDIUM.

AC/01 SMALL

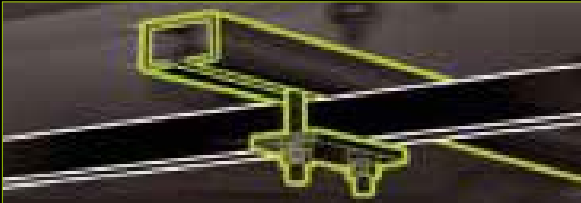


AC/02 MEDIUM

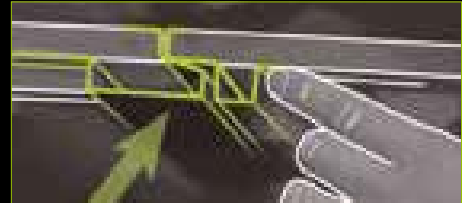




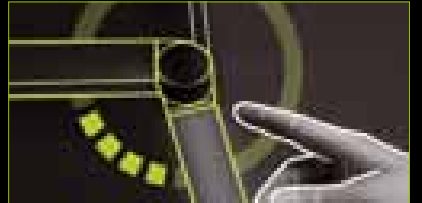
OPENING AND CLOSING
 The automatic pop-up, swivel opening is the main reason for the Air-Campings' success: since 1959, it has remained unchanged, faithful to its original design and well known simplicity. Once you have removed the cover, the tent opens in three seconds, simply by pulling down and lowering the ladder. Nothing further is required!



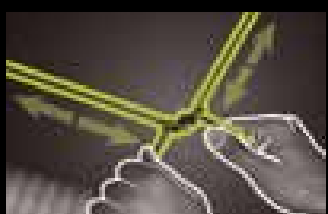
Two mounting channels on the underside of the tent base, plus locking clamps, enable a quick installation of the tent on any vehicles roof bars or rack, they also allow you to customize the opening system: Standard or Explorer. The whole installation can be completed without further drilling or modification.



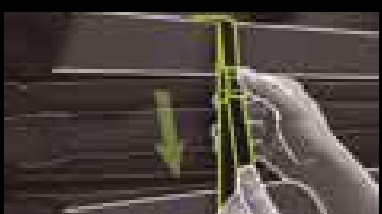
Exclusive hinge system allowing the two halves of the tent base to "lock" together.



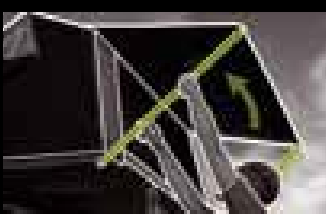
Ladder anti-slip mechanism.



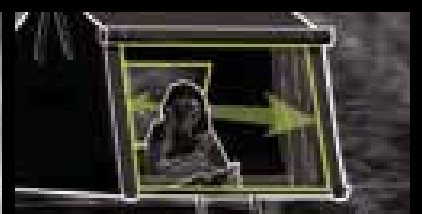
The removable inner elastic cords (supplied) make folding the fabric much simpler.



Two attached cam buckle straps keep the tent closed and compact, when sleeping bags or blankets have been left inside the tent.



The poles supplied create a practical awning.



Double opening.



1.200 nights in the Air-Camping tent of the Dragesco brothers.

Two brothers, Alain and Eric Dragesco, from Paris are professional photographers, have confirmed sleeping 1.200 nights in their Air-Camping tent in the space of 5 years.

In 1988, when returning from a long journey in Pakistan, they wrote «This tent is comfortable and safe, a really outstanding tent, it has been very serviceable for us».





**There are people who dream of travelling,
and people who make dreams travels.
Allow yourself the biggest luxury
in the world: Freedom.**



The tent of the Dragesco brothers that is mounted on a small military luggage trailer. Pass of Baltistan, Pakistan, at an altitude of 3.500 m.



Target: Africa.

Francesco Delogu and five friends were members of a sport and scientific rally made in 1987 through Tunisia, Algeria, Nigeria, Cameroon, Central African Republic, Zaire, Rwanda, Tanzania and Kenya.

In three months, driving two Toyota Land Cruisers, they covered 13.000 km of roads, tracks and cross-country trails. Their hotel room has always been their Air-Camping tent.



AIR-CAMPING
ITALIA

AIR-CAMPING
ITALIA

ellesse



We have spent our evenings telling stories, no TV or radio, only the fire crackling and dancing among ourselves, to warm up our hearts.

Jürg Solberger, tour-leader



OVERLAND

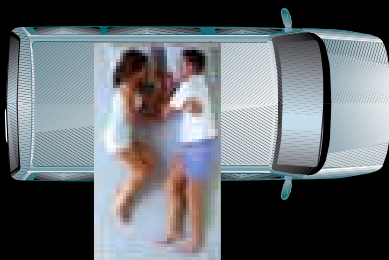
The adventure continues

Just when you believe you've seen everything it's then the biggest surprises come along. With an extraordinary background and a series of innovations, Overland represents the absolute evolution of its class. Identical to the everlasting model of Nino Cirani but with new appealing colours, this roof tent offers travellers the perfect style to suit all requirements for all adventures. History changes appearances to meet new trends and Overland distinguishes itself here too. Not only for it's tried and tested, ingenious, functional and rigorously windproof design, but also for its brand identity which outclasses any others in customer appreciation and sales. As with the whole Autohome range, Overland typifies and perseveres ground breaking innovations, such as the exclusive Automatic Ladder Security System (ALSS) that allows for secure, stable use on any ground conditions, even on the most slippery of asphalt roads. The innovative design characterizes its fabrics as well (certified at 420 grams) and assures both excellent breathability and waterproofing qualities, particularly suitable for harsh outdoor use.

Available in three colour combinations: Grey and Anthracite in the Carbon Model, Grey and Burgundy in the Bordeaux Model and Grey and Beige (Sand) in the Safari Model.

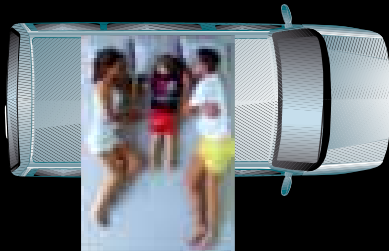


GUIDO BISSATINI



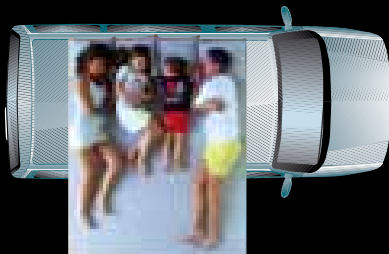
SMALL

Art. OLBX/01 - OLC/01 - OLS/01
Overland Standard Small:
recommended for
2 adults.



MEDIUM

Art. OLBX/02 - OLC/02
- OLS/02
Overland Standard Medium:
recommended for 2 adults +
1 child.



LARGE

Art. OLBX/03 - OLC/03
- OLS/03
Overland Standard Large:
recommended for
2 adults + 2 children.

STANDARD MOUNTING

Opening and side entrance:
suitable for any kind of vehicle.
Available for Small, Medium
and Large models.



EXPLORER MOUNTING

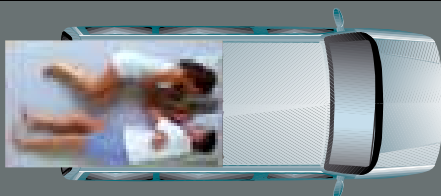
Opening and rear entrance is
particularly suitable for off road
vehicles.
Optional extra, available on small
and medium only.



GUIDO BISSATINI

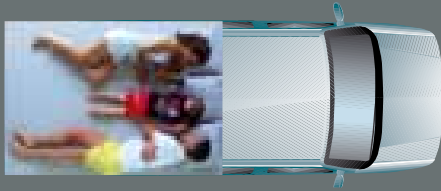
STANDARD

EXPLORER



SMALL

Art. OLBXE/01 - OLCE/01
- OLSE/01
Overland Explorer Small:
recommended for
2 adults.



MEDIUM

Art. OLBXE/02 - OLCE/02
- OLSE/02
Overland Explorer Medium:
recommended for
2 adults + 1 child.



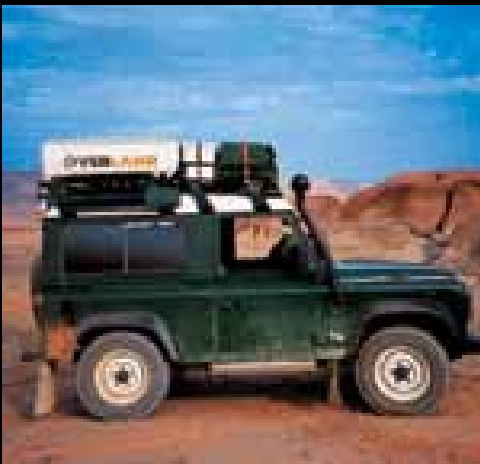
1
The travel over-cover can be quickly removed by the single elastic tensioner. The particular configuration always assures the maximum adherence also during the trip.



2
The ladder is permanently connected to the base of the tent and allows to open quickly the tent with no effort.



3
Overland is ready in a moment: your holiday can afford any comfort you would like to have.



TECHNICAL

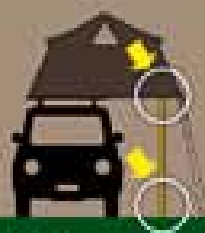
Technical last generation's solutions

The several technical Overland's innovations create a new quality and comfort which have never been achieved by tents using side closings. Autohome has completely revised/redesigned the basic idea of roof tents by creating an entirely new type of structure/frame.

The indestructible frame incorporates brackets for the attachment of the access ladder. While the unique Autohome Automatic Ladder Security System (ALSS) prevents the ladder from slipping, the spring loaded 'locking device' ensures the tent remains stable under any conditions.



Automatic Ladder Security System: how innovation is created.



1960

The stability of the structure is assured by very big support bars.



1970

The ladder is fixed by pegs: this solution is not good on hard or slippery ground.



1990

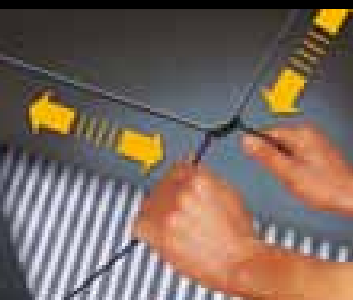
The structure is equipped with shorter or longer ladder tie bars.



2003

Automatic Ladder Security System

Self supporting structure which incorporates the Automatic Ladder Security System (ALSS) is created!



Elastic tensioning straps inside the tent help to fold the fabric into place when closing the tent, particularly useful on high vehicles.





The reinforced aluminium ladder can easily be extended from 110cm up to 225cm making it suitable for any vehicle and the steel guides ensure its stability, even in sand.



When travelling the closed ladder lies on the base of the tent under the travel cover (110 cm when it is closed).



The ladder has a simple to operate mechanism allowing full adjustment to be carried out even in total darkness.



The strong structure consists of special profiles being incorporated in the frame, which give the structure the highest transversal rigidity. Developed to withstand under any conditions.



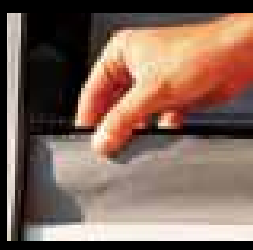
Strong PVC travel over cover, Small packed size.



Small packed size, with tight fitting travel over cover, ensures stability and reduced noise.



Support bars hold open the doors to create awnings.



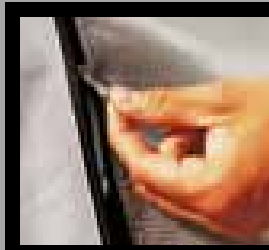
To protect against cold, wind and sand, a special zip fastener, can be closed at the base of the door.



The windows are equipped with drip, mosquito net and double roll up, roll down protection curtains to be adjusted from inside through strings and zip fasteners: protection from wind and rain.



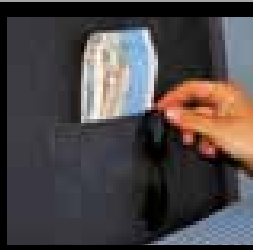
The plates on the sides better fix the fabric at the base of the tent.



The large openings are equipped with mosquito nets that can be closed by double slide zip fasteners.



The roof stakes are equipped with condensate proof covering: no need of additional sheets or inner cabins.



Each tent has two large storage pockets.



The outer of the bottom shell has been given a plastic coating, for increased longevity, while the mattress inside, sits in an insulating protective cover.



TECHNICAL

Choose your colour.

All the Overland models are available in three colour combination: Carbon, Bordeaux and Safari.

By varying the configuration of the "C" guide mounting rails, the tent can be mounted in two ways. Standard mounting, opening to the side of the vehicle, or Explorer mounting opening to the front or rear of the vehicle. With the Explorer mounting being particularly suitable for off-road vehicles.

CARBON

BORDEAUX

SAFARI

High quality 420g fabrics, are both waterproof and breathable due to their 50% cotton – 50% acrylic construction.



MOUNTING STANDARD

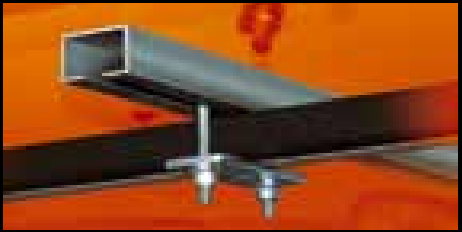




Compression straps ensure the tent and bedding remain in place whilst travelling.



Elastic strap, used to hold bedding in place when packing down the tent.



Unique "C" guides and clamps allow for easy installation and removal of the tent from the vehicle.



MOUNTING EXPLORER



OVERLAND

ACCESSORIES

Accessories for
all requirements.



Independent verandah (Art. OL/04A)

Dimensions: 200 x 260 x h 240 cm.

According to our testers' experience, we have understood that also Overland verandah shall be independent.

Living & sleeping areas are communicating but at the same time separate rooms: it is the best solution to get a freedom of movement and at the same time a standing point of reference where tables, chairs, barbecue, food and drinks, etc. ... are kept.

Should the standing time be longer, the tent becomes a well-structured, comfortable and safe module, (art OL/06A) to go camping in a traditional way; this is possible thanks to its ground feet.



Anodised Aluminium Poles



Independent verandah (Art. OL/04A)





Feet (Art. OL/06A)

Four strong folding feet keep the tent raised some 25cm off the ground protecting the base of the tent from water, condensation and insects.

Solar reflective and Winter hood (Art. OL/05A)

Made of resin bonded nylon fibre and aluminium powder. Excellent protection from the burning effect of the sun's rays, and equally useful for extra insulation in colder conditions. Quickly attached, by Velcro strips, and removed, it can also provide additional protection in the most extreme of conditions. Can be left in situ when closing the tent.



Changing room Carbon

(Art OLC/07A for cars) - (Art OLC/08A for off-road vehicles and vans)
 Dimensions cm: Small 130 x 110 - Medium 160 x 110 - Large 180 x 110
 Suitable for people, who "never stop": practical and lightweight accessory, it can also be used as a small verandah thanks to its zip fasteners.



All Overland accessories are colour coordinated in Carbon, Bordeaux and Safari, and built to the same specifications as the tents.



Changing room Bordeaux
 (Art. OLBX/07A for cars)
 (Art. OLBX/08A for off-road vehicles and vans)

Changing room Safari
 (Art. OLS/07A for cars)
 (Art. OLS/08A for off-road vehicles and vans)

Feet (Art. OL/06A)





OVERZONE

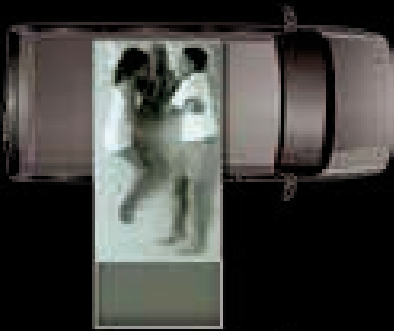
A Range of Success

The Overzone can trace its ancestry through a pedigree range of tents. As an evolution of the successful Overland, it's the largest model of tent in the "fold over" range. Compared to the Overland, there's more internal space with total protection from the elements, including the main entrance doorway. The Overzone meets the most demanding requirements of the adventure traveller offering total privacy and freedom. At the heart of the Overzone is a strong, lightweight aluminium frame, encased in breathable, water-proof 420g heavy duty cotton fabric in keeping with the world renowned Autohome tradition, whilst creating a new era of user friendly features. The striking appearance is due to a well-proportioned, streamlined design, making the Overzone a perfect solution for people wanting to explore imposing landscapes, where adventures occur every day.

The Overzone has two mounting options, Standard and Explorer.
Standard Option - opening over the side of the vehicle, particularly useful for vehicles with a lifting tailgate. Explorer Option - popular with 4x4 owners.
The tent offers shade or shelter above the rear door.

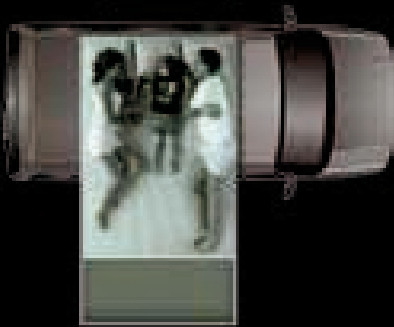


STANDARD



SMALL

Art. OZ/01
Overzone Standard Small:
recommended for 2 adults.



MEDIUM

Art. OZ/02
Overzone Standard Medium:
recommended for 2 adults +
1 child.

EXPLORER



SMALL

Art. OZE/01
Overzone Explorer Small:
recommended for
2 adults.

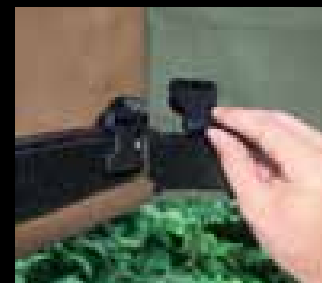


MEDIUM

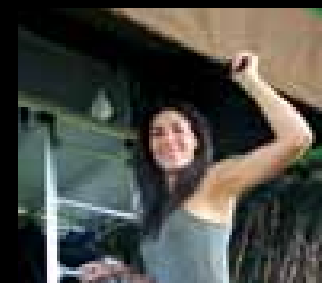
Art. OZE/02
Overzone Explorer Medium:
recommended for
2 adults + 1 child.



Both removal and refitting of the heavy duty travel cover is extremely simple, using only one simple tensioning cord.



All models are configured to accept the "day room" using quick, simple and strong 'snap buckles' and 'velcro' fastening.



SAFARI

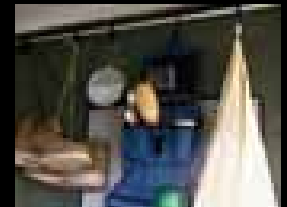
OLIVE



Large entrance doors as standard, opened and closed using strong vertical and horizontal zip fasteners.



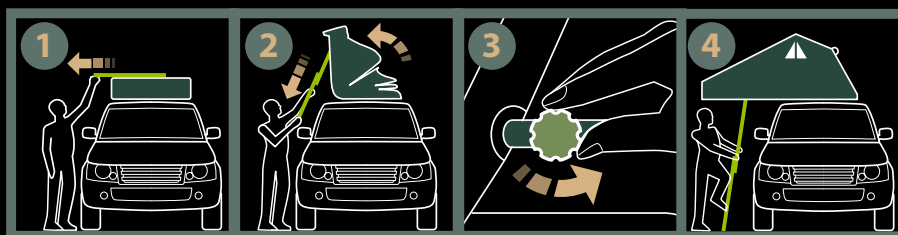
Adjustable tensioning bar, in combination with straps to maintain rigidity and stability at the entrance.



Multi-use hooks to organise your daily essentials.



Internal and external window covers, both of which can be opened and closed from inside the tent. Vertical opening external window covers eliminate any sail effect on the tent material.



Extending the built-in ladder enables it to be used as a lever to open the tent. The entrance area is then held open with two extending poles.

ACCESSORIES



Day Room

Cars & trailers: art. OZ/04A (Small cm 130x180, Medium cm 160x180)

4x4 & campers: art. OZ/05A (Small cm 130x180, Medium cm 160x180)

Accessories are made from the same quality 420g fabric as the Overzone.

The Day Room consists of 4 panels with zip fastener doors. Each side has one window; one a fixed transparent window, and one with mosquito mesh, both have 'curtains' for privacy. To use the end panel as an extended awning two telescopic poles are supplied.

A practical, easy to use non-bulky accessory, with a multitude of uses such as kitchen, dressing area, toilet tent or shower room.

Winter Hood (Art. OZ/03A)

Traditional hood made from aluminised nylon to offer increased protection from sun rays and cold conditions.



OVERCAMP

Tradition meets innovation

Overcamp represents the latest concept for today's camping needs. Great attention to detail, the attractive colours and design, the reassuring tough fabric which is waterproof, strong outer structure smooth to the touch are just some of the outstanding and eye-catching features of Overcamp.

Overcamp offers additional storage capacity on roof rack, allowing you to carry your sporting equipment easily: your bicycle, canoe, surfboard, hand glider or other accessories for your favourite sport. Another feature is the unique Double-up system which allows you to obtain twice the normal living space by fitting two tents on one roof.

You can carry two Overcamp even on the smallest of cars and obtain four places (2+2) or eight places on large vehicles (4+4) providing two totally independent bedrooms. Overcamp is the unrivalled choice for adventure going people.





Overhanging positioning: the tent occupies one half of the vehicles roof.

The 2 "C" shaped mounting channels in the tent base and 4 clamps, supplied, allow the user to position the tent on the vehicle roof according to their needs and requirements. The exclusive hinge mechanism allows a safe and secure overhang to one half of the tent, allowing bikes, surf boards or other sports and leisure equipment to remain in place on the other half of the vehicle's roof bars, always ready for use.



SMALL

Art. OGY/01
Overcamp Small: recommended for two adults. Central positioning: the tent will occupy the car roof space. Open: 130x 200 x 100 cm high. Closed: 65 x 200 x 30 cm high

MEDIUM

Art. OGY/02
Overcamp Medium: recommended for two adults and two children. Central positioning: the tent will occupy the car roof space. Open: 180 x 200 x 115 cm high. Closed: 90 x 200 x 30 cm high

DOUBLE UP

Double Up
Side positioning: the tent will occupy only half of the car roof space. You can fit: Small + Small, Medium + Small or Medium + Medium on large vehicle

TECHNICAL

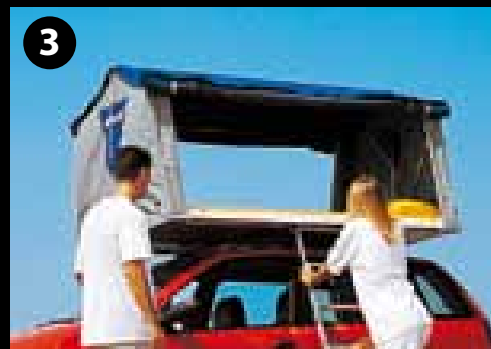
Small while in transit,
spacious when open



1
When closed the tent looks like a small roof box. The over cover is secured by a continuous elastic cord which is very easy to remove and being made of strong PVC material, it offers complete protection while travelling.



2
Quick and easy book style opening. By just pushing down on extended ladder, the tent will open and in an effortless instant your bed is ready.



3
A comfortable and safe bed totally raised from the floor.



Overcamp Medium with four places. Wherever you are, a comfortable bed totally raised from the floor, far from nasty surprises.





1 - Fabric 50% cotton and 50% acrylic. Waterproof, tear and mould resistant, keeps its shape, offers great ventilation and doesn't retain the heat.

2 - Multi-layer base. Long fibre wood coated on both sides with plastic material, it is waterproof, mould resistant and doesn't lose its shape.

3 - Thick foam mattress, removable cover, with two or four pillows. Elastic under-mattress for extra protection.

4 - Strong self-contained adjustable telescopic ladder.

5 - Windows fitted with fine mesh mosquito nets and zip fasteners to create useful shutters.

6 - A guy rope enables you to open the windows from inside.

7 - Water diversion system to stop water seeping through.

8 - Two inner storage pockets.

9 - Two air inlets with velcro closure

10 - Mosquito mesh on both sides, that can be rolled-up or closed by simple zip fasteners.

11 - Large openings that can be closed by two vertical zip fasteners and one zip fastener on the base to protect from draughts. Two support bars hold open the doors to create roomy awnings.

12 - Exclusive self-guiding system developed to withstand different stresses allowing a long life.



OVERCAMP

ACCESSORIES

Practical easy to use accessories

Self contained, easy and quick to assemble, it makes your holiday, weekend or adventure trip even more comfortable without impeding your freedom of movement.

Each Overcamp model can be supplied with:

- **The Verandah**, totally self-contained for a comfortable stay.
- **Winter hood**, made of nylon fibre, it is an invaluable protection against the cold and wind.
- **Feet**, for placing Overcamp on the floor.
- **Awning**, very useful for a short break.
- **Double awning**, a single large awning to place on top of Overcamp when combined together.

Other accessories: roof-bars, space saving garage storing rack, PVC mats, bike and surf/kayak racks.



Triangles of series with zip to attach the verandah to Overcamp on the floor, another option for a really comfortable holiday.



Verandah (Art. O/03A)
Verandah (200 x 280 x 240 cm high).
Quick and easy to assemble.
It is very versatile with openings fitted with two-way zip fasteners on all sides.
Used with Overcamp, it transforms it into a traditional camping tent with day and night areas.





Feet (Art. O/06A)

Four strong feet to enable you to place Overcamp on the floor if desired. Approximately 25 cm high, they keep you a safe distance from humidity, water and insects. Foldable and clutter free, they can remain attached at the base while in transit.

Winter hood (Art. O/08A)

Made of resin blonded nylon fibre and aluminium powder, it is an invaluable protection against the cold and wind. Extremely useful for travellers going North. Very quick and easy to fit, it can be left on even when Overcamp is closed.



Self-contained Verandah (Art. O/03A)

A spacious, self-contained strong structure, which allows you to move your car whenever you want. You are free to drive around and leave your equipment protected from the weather.

Awning (Art. O/05A)

A large and functional awning attached to Overcamp by means of a zip fastener, its self-contained strong structure provides extra protection from the sun and rain. Roof: 200 x 170 cm Length 4 metres approx.



AUTOHOME®

WORLD LEADERS IN ADVENTURE EQUIPMENT



UNIVERSAL

Universal Attachment System

The exclusive Autohome security system allows all tents to be used on any vehicle: small cars, off-road vehicles, station-wagons, MPV's (or people carriers), camper vans, and pick-up trucks...

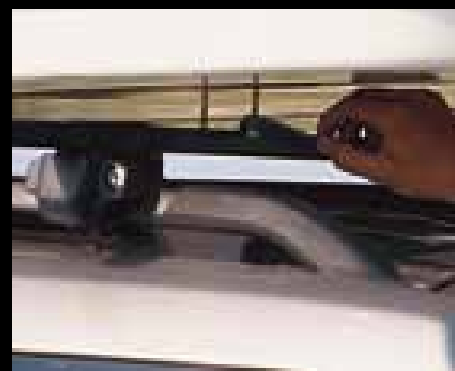
A universal, quick attachment system, allows you to position the tent safely in any position, with no risk of damage or modifications to the body of the vehicle.

Various fixing kits are available to suit.



The tents are completely independent of the roof rack, so attachment is simple and straightforward.

An example of a roof rack for motor cars without water channels.



The Autohome universal attachment system allows for quick and safe positioning of the tent with no risk of damage to the vehicle body.

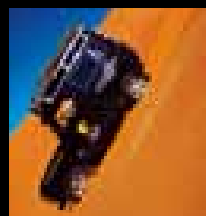
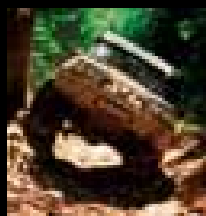
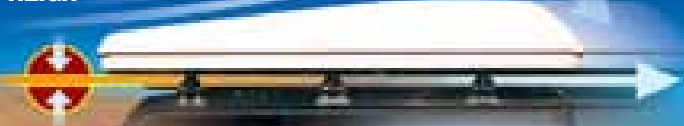
Two strong "C" shaped channels allow for safe positioning of the tent.

Each tent is supplied with clamps, which slide in the mounting channels, connecting the tent to the roof rack. A safe, tried and tested system.

Compact when closed, with little affect on vehicle noise and stability.

The integrated universal fixing system leaves little room between the tent base and the vehicle roof, reducing wind noise and ensuring a low centre of gravity.

MINIMAL HEIGHT





SYSTEM

The universal attachment system offers complete versatility, fitting any vehicle, it can be positioned or adjusted easily and quickly to ensure complete safety of the tent and vehicle at all times.



Connection for off-road vehicles or motor cars with water channels.



Attachment bars for motor cars with fitted rails.



Special Order: Roof Bars or Expedition Roof Racks available in Steel or Aluminium.



Different solutions and roof bars for hard-top vehicles.

UNIVERSAL ACCESSORIES



Rolling Top
(Art. R/TOP Small cm 180x180)
(Art. R/TOP Medium cm 220x225 extension)
Awning with built in supporting legs that's easily installed to roof racks. Practical and always ready to use, it creates a simple and effective shelter. Also indicated for journeys and African safaris.



Space saving kit (art K/15A).
Garage accessory: pulley system that allows all models of roof tents to be raised from the vehicle for storage.



Air Circulation System (art. ACS-3D)
New accessory to be positioned underneath the mattress. Made from a lightweight (450g/m2) woven polypropylene it's semi elastic and allows a free flow of air between tent base and mattress, increasing ventilation and reducing the chance of condensation. The lightweight mesh construction is compression resistant (1 ton/m2) and is available in three sizes to fit all models of roof tent: Small (cm 120x210), Medium (cm 140x210) and Large (cm 160x210).



PERFORMANCE

Test results have been obtained from inspectors using a sample method survey on tents delivered during 2010.

	MAGGIOLINA						COLUMBUS				TEXTILE RANGE			
	CARBON FIBER	AIRLANDER	EXTREME	GRAND TOUR	SAFARI	AIRTOP	COLUMBUS	VARIANT	CARBON FIBER	X-LONG	A-C	OVERLAND	OVERZONE	OVERCAMP
OPENING SPEED	●●	●●	●●	●●	●●	●●●	●●●●	●●●●	●●●●	●●●●	●	●	●	●
ACCOMMODATION AREA	●●	●●	●●	●●	●●	●●	●●●	●●●	●●●	●●●●	●●●	●●●	●●●●	●●
CAPACITY OF SHELLS	●●	●●	●●	●●●	●●	●●●	●●	●●	●●	●●	—	—	—	—
TRANSPORT (BIKE, SURFBOARD, ETC...)	—	—	●●	●●	—	—	—	●	—	—	●●	●●	●●	●●●
MAXIMUM LOAD AND THE SHELLS	—	—	25 kg	15 kg	—	—	—	15 kg	—	—	—	—	—	—
AERODYNAMICS WHILE TRAVELLING	●●●	●●●	●●	●●●	●●●	●●●	●●●	●●●	●●●	●●●	●	●	●	●
STABILITY IN STRONG WINDS	●●●●	●●●●	●●●●	●●●●	●●●●	●●	●●	●●	●●	●●	●	●	●	●
INSULATION AGAINST HEAT	●●●	●●●	●●●	●●●	●●●	●●●	●●●	●●●	●●●	●●●	●●	●●	●●●	●●
INSULATION AGAINST COLD	●●●	●●●	●●●	●●●	●●●	●●●	●●●	●●●	●●●	●●●	●	●	●	●
DURABILITY IN OFF-ROAD SITUATIONS	●●●	●●●	●●●	●●●	●●●	●●●	●●●	●●●	●●●	●●●	●●●	●●●	●●●	●●●
FABRIC FEATURES	●●● DRALON	●●● DRALON	●●● DRALON	●●● DRALON	●●● DRALON	●●● DRALON	●● AIRTEX	●● AIRTEX	●● AIRTEX	●● AIRTEX	●●● K 200	●●● K 200	●●● K 200	●●● K 200
BREATHABLE FABRIC	●●●	●●●	●●●	●●●	●●●	●●●	●●	●●	●●	●●	●●●	●●●	●●●	●●●
TECHNOLOGICAL INNOVATION	●●●●	●●	●●●	●●●	●●	●●●	●●	●●●	●●●●	●●●●	●●	●●	●●	●●

EVALUATION: ● = GOOD ●● = VERY GOOD ●●● = EXCELLENT ●●●● = SUPER

AUTOHOME®

WORLD LEADERS IN ADVENTURE EQUIPMENT



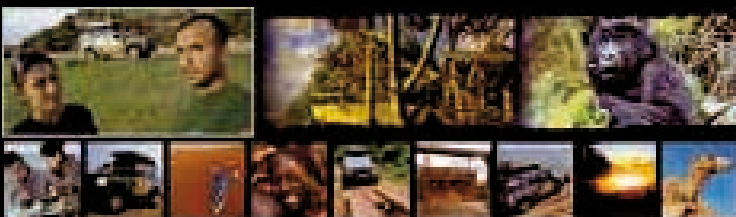
Martin Mikulencák - Extreme adventurer - member of Hummer Island Expedition - Vatnayokull Glacier (Iceland)

«The biggest glacier in Europe, is in Iceland. We were afraid of suffering from the cold and the wind blowing in gusts, but thanks to both the Winter Hood on the roof tent combined with the strength of the tent structure we had absolutely no problem. Other kinds of tent could surely not be so reliable!»



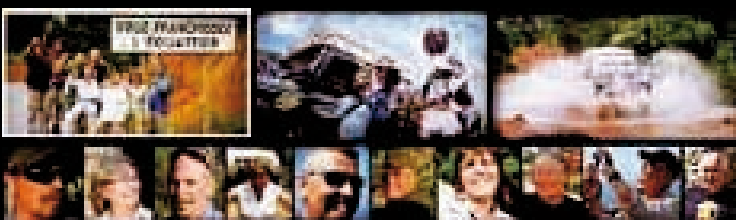
Desert Scorpion - The winning team

From Saharan dunes to Australian deserts, from Iceland geysers to Himalayan peaks: the "scorpions" are one of the most active groups visiting foreign countries. They are present as technical support groups at important world competitions, such as Rain Forest Challenge in Malaysia; they have done six Saharan expeditions plus many other different places visited throughout the whole world.



Akis Temperidis e Voula Netou - Superstar travellers

"It's us again! Just to tell you that our life is great with our Maggiolina. We've actually slept more than one year (that's more than 300 nights out of 475 total days of our trip) in there and we still enjoy it. Greetings from Bangkok, Thailand."



Juerg, Angelica, Tom, Cornelia, Jean Pierre, Alexandre, Doris, Heidi, Jean Francois, Erich - Trans-Afrika

"There are dreams in life it's necessary to fight for"

"Nine weeks throughout West Africa up to Cameroon continuing through Gabon, the two Congos, passing through Angola in to Namibia, arriving at Cape of Good Hope in South Africa".



Sonja Vietto Ramus - Ténéré 2000 - Photographer and journalist for off-road vehicle & race team magazines.

"Both Africa and motorcycles are my passion and my job: since 2000, I travel to North Africa to photograph cars and motorcycles competing in the most beautiful deserts of the world. I always travel with friends, in a Toyota vehicle and an Autohome tent, my passport to adventure!"

TESTED IN



Carsten Averkamp - Project Manager

Lutz Rathmann - Lead Instructor Tour leaders and international selectors affiliated to the most important expeditions.

Land Rover Experience is aimed at training off-road drivers to enable them to discover exotic regions, far from the usual tourist routes. No matter what the circumstances or conditions, with Autohome, one is certain to get the best results!





THE WORLD



Silk Road - Jürg Solberger, Severin Bucher and his team, professionals and experienced in great adventure-trips.
From west to east on Marco Polo's tracks to discover history and events which left their mark on people's fortunes.



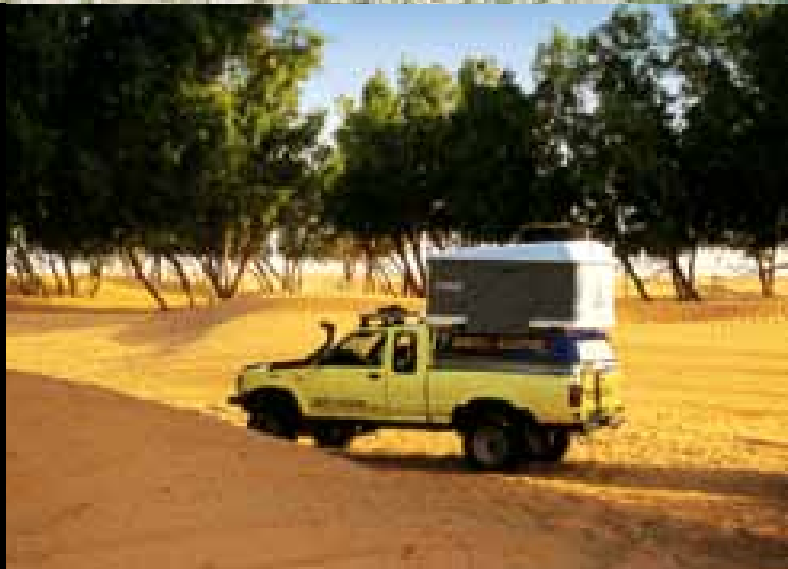
Sfefano Pesarelli e Francesca Guazzo
Majestic natural landscapes, people, boundless savannas and animals have featured in this African crossing. The Ilha de Mocambique even inspired an architectural degree dissertation to protect the environmental and historical value of the region.



Roberto Cattone - Tour leader
"In some rare cases and always supported by valid reasons, only a name is enough to create or make images, sensations and emotions live again. Autohome is one of these names: a box of both small and great adventures, far and close memories, comfort and rest; I can still smell the sand and hear the silence of the stars."



Jean Pierre Steinhagen - Desert Live - Travel Organisation
Ex rally driver and experienced in African deserts. "We are a team of instructors with a great passion for Africa who put their know-how at the disposal of anyone who would like to discover the desert's landscapes. There are still a few places in which men have not yet been, but thanks to Autohome there will be even less."



Stephan Wermuth - Photographer and Bilja (on the left side)
"Dunes high like mountains during the day and a 5 star bedroom at night. I am not jealous of my Maggiolina if most of the times she is the star. On the contrary, I am proud of knowing that the pictures taken already obtained an honourable place. On the other hand, the same pictures have also been hung on the walls of my home... When you go to the ends of the earth you never know what to expect. For this reason, it is better to be properly equipped."



Bernd Woick and his passion for Africa
Experienced traveller and master of survival, he involved his whole family for years in different Tours throughout Africa. Some time ago, Woick transformed his passion for adventure in a real occupation.



AUTOHOME®

WORLD LEADERS IN ADVENTURE EQUIPMENT



LEADER IN



Jiri Chramosil - Volkswagen Touareg Club - Instructor and International Tester makes journeys all over the world.

"The sun burns, the sand is lifted in dusty whirls, it is so hot that the sky mingles with the flickering desert. Still a few kilometres and you reach your destination. A precise destination does not exist, but what counts is that with your Maggiolina you always reach home, wherever you are. Maggiolina: quality in perfect style."



Any Soares from Cabo-Verde and Daniele Benzi from Milan to Iceland

"Our team is composed of artists, graphic designers and photographers who love their job and through their creativity and curiosity push us to discover new routes all the time.

The magic forces dominating the reign of Nordic legends seem to have inspired our trip up to the point in which the last sun ray appears. It is wonderful!"



Diego Assandri and Luca Oddera - Jambo

Would you be interested in travelling through Africa by car.... Give me some time, I have to think about it... The expedition "Down through Africa" (Trans-West Africa) takes its origins from the meeting between the photographer Diego Assandri and the philosopher Luca Oddera. From Tangier to Cape Town, 25.000 km throughout the whole Dark Continent to bring humanitarian aid in Congo R.D. by means of "Amici per l'Africa" Association. "Houston we have a problem: here children have never been on the moon."



Pierluigi Rizzato - Wildlife Photographer

Photographer for over twenty years dedicating great passion and commitment to his work in nature photography. His photographs have earned him more than 180 awards abroad, winning photographic contests in Argentina, Austria, Belgium, Canada, China, Croatia, Germany, Great Britain, India, Indonesia, Holland, Republic of San Marino, Scotland, Singapore, USA and Vietnam. Standing out amongst all these is the Grand Prix of Trierenberg, Austrian Super Circuit, the largest annual salon of photography on the planet.



Sergi Garcia - Tour leader

"Our target is not only to travel but also to know and interact with the different populations and cultures we meet during our journey, always offering our help and cooperation to anyone who needs it."



Edo Bauer - "I like hard work in a simple camp, on clear or dark nights and when the sandstorm rages the desert is terrible and merciless, but if you know it, you cannot forget it". My work consists of writing and taking photographs of motorcycles in Africa. Deserts are nearly always my destination and the tent on my Toyota roof is my 'village all inclusive'.

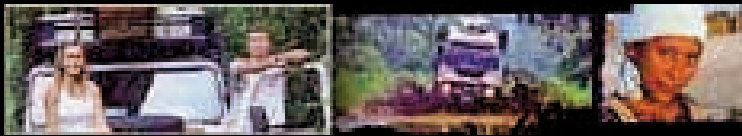


Honza Perlik - Enthusiast raider "...It was very cold, we were in a perfectly closed room: windows, doors and any opening were totally closed and we had no humidity problem. It is really true: the tent fabric is like the highly breathable fabric of our jackets. Maggiolina is in our opinion the best product available and we recommend it absolutely! Bye Bye."



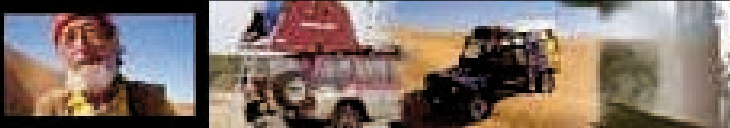


THE WORLD



The Great Escape

Autohome's Off-Road experience has been gained "in the field". During the last fifty years, explorers, reporters, photographers and adventurers have contributed to the development of tents which are of superior technical achievement as well as an extremely practical and flexible.

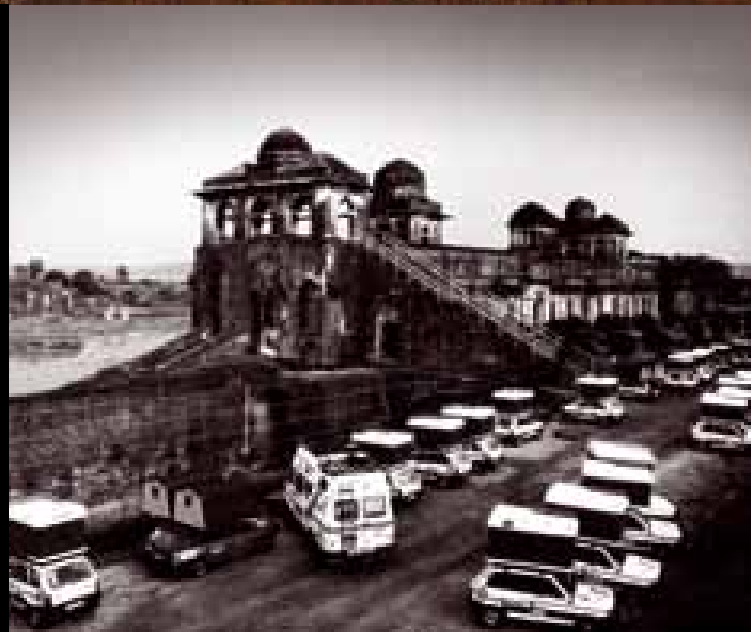


Fritz Bez - Skilled traveller

"Better the devil you know than the devil you don't know".

Anyone who wants to reach the ends of the earth knows that not only motorways will be waiting for him, but also many dirt roads, impenetrable forests, sandy landscapes and ancient routes.

To make you feel at home anywhere in the whole world, Autohome is a great certainty.



Enrico Caruso and Lucia Tincani - Enthusiastic travellers

"Up on a gorge with a panoramic view of a glacier, in front of an elk weighing 450 kilograms or close to a stream, there are always good reasons to stop and camp. The important thing is to have a Maggiolina. The right product for any situation. Kind regards to everybody."



Ronny Stavsholt [Norway] - Enthusiastic raider

"Wonderful nights are impressed in my heart. Sometimes I exaggerate a bit, but when I am at the ends of the earth, there is only a "handle" that can save me: Maggiolina is my faithful companion. I love it very much!"



Doris Sollberger - China

Doris Sollberger has been travelling in Africa, Asia, America and Mexico with her husband since 1986. The mother of four children she sleeps on these trips in roof tents from Autohome. As a guide and owner of ATW.CH she is not only responsible for the children, she also drives the Land Cruiser herself as well as taking care of the groups.



AUTOHOME®

WORLD LEADERS IN ADVENTURE EQUIPMENT

THE ORIGINAL

MAGGIOLINA CARBON FIBER

MAGGIOLINA AIRLANDER



SMALL

Mod. 130 x 210
Closed h: cm 30
Open h: cm 92
Weight: about 46 kg
Volume: about 196 l*



MEDIUM

Mod. 145 x 210
Closed h: cm 30
Open h: cm 92
Weight: about 49 kg
Volume: about 220 l*

Art.MCF/01 - Maggolina Carbon Fiber Small
Art.MCF/02 - Maggolina Carbon Fiber Medium

Includes: carbon fibre shells for maximum resistance and lightness, waterproof and transparent dark grey dralon textile, 2 doors with step by step opening and 2 triangular windows, mosquito nets on all windows and doors, 4 universal clamps for attachment to roof bars, 1 opening handle, soundproof and anti-condensation roof insulation, 1 mattress with 2/3 pillows, 2 air inlets, 1 head light, 1 height adjustable alloy ladder, ladder storage bag, elastic straps assist in folding the fabric when closing.



SMALL

Mod. 130 x 210
Closed h: cm 30
Open h: cm 92
Weight: about 56 kg
Volume: about 196 l*



MEDIUM

Mod. 145 x 210
Closed h: cm 30
Open h: cm 92
Weight: about 60 kg
Volume: about 220 l*

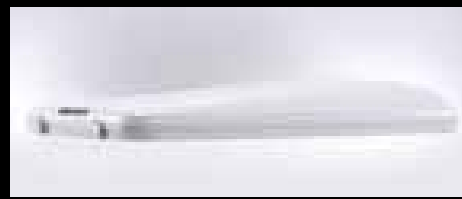
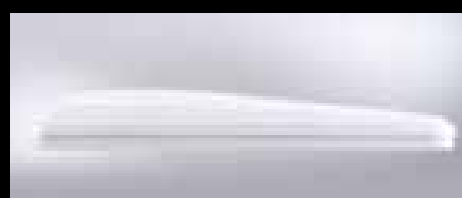


LARGE

Mod. 160 x 215
Closed h: cm 30
Open h: cm 92
Weight: about 72 kg
Volume: about 260 l*

Art. MB/09 - Maggolina Airlander Blue Small
Art. MG/09 - Maggolina Airlander Gray Small
Art. MB/10 - Maggolina Airlander Blue Medium
Art. MG/10 - Maggolina Airlander Gray Medium
Art. MB/11 - Maggolina Airlander Blue Large
Art. MG/11 - Maggolina Airlander Gray Large

Includes: 4 universal clamps for attachment to roof bars, 1 opening handle, 2 doors and 2 triangular windows, mosquito-netting on windows and doors, soundproof and anti-condensation roof insulation, 1 mattress and 2-3-4 pillows, 1 interior light, 1 height adjustable alloy ladder.



Genuine Fibreglass

We guarantee that all models of Fibreglass Shell Tents are skilfully constructed entirely by hand.

Their composition is very stable and will not weaken or fade over time like common plastic or similar products available on the market. In addition, the composition of glass fibre polyester used, is a perfect insulator from hot and cold environments and if necessary can be easily repaired or painted to colour match your vehicle.

RANGE OF VEHICLE ROOF TOP TENTS

MAGGIOLINA
EXTREME

MAGGIOLINA
EXTREME FOREST

MAGGIOLINA
GRAND TOUR



SMALL

Mod. 130 x 210
Closed: h cm 33
Open h: cm 90
Weight: about 65 kg
Volume: about 203 l*

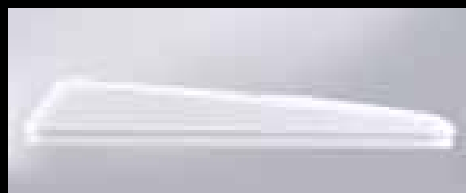


MEDIUM

Mod. 145 x 210
Closed: h cm 33
Open h: cm 90
Weight: about 69 kg
Volume: about 228 l*

- Art. MC/05 - Maggiolina Extreme Carbon Small
- Art. MG/05 - Maggiolina Extreme Gray Small
- Art. MB/05 - Maggiolina Extreme Black Storm Small
- Art. MC/06 - Maggiolina Extreme Carbon Medium
- Art. MG/06 - Maggiolina Extreme Gray Medium
- Art. MB/06 - Maggiolina Extreme Black Storm Medium

Includes: 2 adjustable load bars on the upper shell, 4 universal clamps for attachment to roof bars, 1 opening handle, 2 doors with step by step opening and 2 triangular windows, mosquito-netting on windows and doors, soundproof and anti-condensation roof insulation, 4 removable pockets, stowage net, 1 mattress and 2-3 pillows, 2 air vents, 1 interior light, 1 height adjustable alloy ladder, ladder storage bag, elastic straps assist in folding the fabric when closing.



PAGE 14

(l*) Approximate value indicating the volumetric capacity of the upper shell of the tent, when the tent is closed



SMALL

Mod. 130 x 210
Closed: h cm 33
Open h: cm 90
Weight: about 65 kg
Volume: about 203 l*



MEDIUM

Mod. 145 x 210
Closed: h cm 33
Open h: cm 90
Weight: about 69 kg
Volume: about 228 l*

- Art. M/05F - Maggiolina Extreme Forest Small
- Art. M/06F - Maggiolina Extreme Forest Medium

Includes: 2 adjustable load bars on the upper shell, 4 universal clamps for attachment to roof bars, 1 opening handle, 2 doors with step by step opening and 2 triangular windows, mosquito-netting on windows and doors, soundproof and anti-condensation roof insulation, 4 removable pockets, stowage net, 1 mattress and 2-3 pillows, 2 air vents, 1 interior light, 1 height adjustable alloy ladder, ladder storage bag, elastic straps assist in folding the fabric when closing.



PAGE 16



SMALL

Mod. 130 x 210
Closed h: cm 36
Open h: cm 96
Weight: about 58 kg
Volume: about 344 l*



MEDIUM

Mod. 145 x 210
Closed h: cm 36
Open h: cm 96
Weight: about 62 kg
Volume: about 378 l*

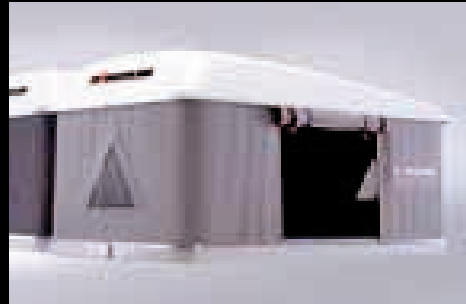
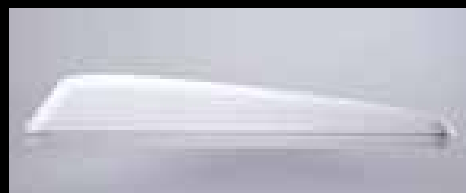


LARGE

Mod. 160 x 215
Closed h: cm 36
Open h: cm 96
Weight: about 73 kg
Volume: about 461 l*

- Art. MC/12 - Maggiolina Grand Tour Carbon Small
- Art. MG/12 - Maggiolina Grand Tour Gray Small
- Art. MC/13 - Maggiolina Grand Tour Carbon Medium
- Art. MG/13 - Maggiolina Grand Tour Gray Medium
- Art. MC/14 - Maggiolina Grand Tour Carbon Large
- Art. MG/14 - Maggiolina Grand Tour Gray Large

Includes: 4 universal clamps for attachment to roof bars, configuration for the attachment of auxillary bars on outer shell, 1 opening handle, 2 doors with step by step opening and 2 triangular windows, mosquito-netting on doors and windows, soundproof and anti-condensation roof insulation, 4 removable pockets, stowage net, 1 mattress and 2-3-4 pillows, 2 air vents, 1 interior light, 1 height adjustable alloy ladder, ladder storage bag, elastic straps assist in folding the fabric when closing.



PAGE 20

AUTOHOME®

WORLD LEADERS IN ADVENTURE EQUIPMENT

THE ORIGINAL

MAGGIOLINA SAFARI

AIRTOP



SMALL

Mod. 130 x 210

Closed h: cm 30

Open h: cm 92

Weight: about 56 kg

Volume: about 196 l*

Art. M/15 - Maggiolina Safari Small

Art. M/16 - Maggiolina Safari Medium

Art. M/17 - Maggiolina Safari Large



MEDIUM

Mod. 145 x 210

Closed h: cm 30

Open h: cm 92

Weight: about 60 kg

Volume: about 220 l*



LARGE

Mod. 160 x 215

Closed h: cm 30

Open h: cm 92

Weight: about 72 kg

Volume: about 260 l*



SMALL

Mod. 130 x 210

Closed h: cm 33

Open h: cm 94

Weight: about 54 kg

Volume: about 271 l*

Art. ATC/01 - AirTop Carbon Small

Art. ATS/01 - AirTop Safari Small

Art. ATB/01 - AirTop Black Storm Small

Art. ATC/02 - AirTop Carbon Medium

Art. ATS/02 - AirTop Safari Medium

Art. ATB/02 - AirTop Black Storm Medium



MEDIUM

Mod. 145 x 210

Closed h: cm 33

Open h: cm 94

Weight: about 59 kg

Volume: about 305 l*

Includes: 4 universal clamps for attachment to roof bars,

1 opening handle, 2 doors with step by step opening and

2 triangular windows, mosquito-netting on doors and windows,

soundproof and anti-condensation roof insulation, 4 removable

pockets, stowage net, 1 mattress and 2-3-4 pillows, 2 air vents, 1

interior light, 1 height adjustable alloy ladder, ladder storage bag,

elastic straps assist in folding the fabric when closing.

Optional X-Long for Small and Medium: instead of the standard

210 cm long, this version is available at 230 cm in length. The X-Long

version is suitable for longer length cars, camper vans, RV's and 4x4's.

Weight: Small about 61 kg - Volume: about 210 l*

Weight: Medium about 66 kg - Volume: about 235 l*

Includes: 4 universal clamps for fixing to roof racks or roof bars,

3 doors with step by step opening (1 each side and

1 on the rear), 2 semi-circular windows (1 front and 1 rear)

2 air vents, mosquito mesh on all doors and windows, anti-

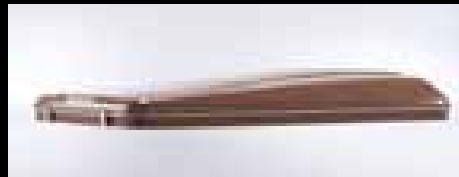
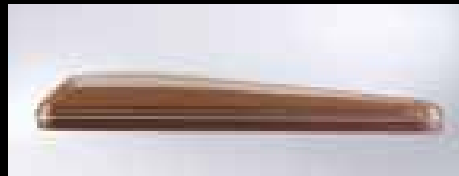
condensation and soundproofing roof insulation, roof mounted

stowage net, 4 removable pockets, 1 mattress and 2-3 pillows,

1 internal roof light, 1 height adjustable alloy ladder, ladder

storage bag, elastic straps assist in folding the fabric when

closing.



PH. PATRICK GALIBERT

RANGE OF VEHICLE ROOF TOP TENTS



COLUMBUS

COLUMBUS
V A R I A N T

COLUMBUS
C A R B O N F I B E R



SMALL

Mod. 130 x 210
Closed h: cm 30
Open h: cm 150
Weight: about 52 kg
Volume: about 196 l*



MEDIUM

Mod. 145 x 210
Closed h: cm 30
Open h: cm 150
Weight: about 57 kg
Volume: about 220 l*



LARGE

Mod. 160 x 215
Closed h: cm 30
Open h: cm 150
Weight: about 64 kg
Volume: about 260 l*

- Art. C/01 - Columbus Small
- Art. C/02 - Columbus Medium
- Art. C/03 - Columbus Large

Includes: 4 universal clamps for attachment to roof bars, 2 door/windows with mosquito-netting, soundproof and anti-condensation roof insulation, 1 mattress and 2-3-4 pillows, anti-condensation Air Cap, 1 height adjustable alloy ladder, elastic straps assist in folding the fabric when closing.

Standard: Columbus Large is Combi version (rear door with mosquito-netting and fixed privacy screen).



SMALL

Mod. 130 x 210
Closed h: cm 30
Open h: cm 150
Weight: about 52 kg
Volume: about 196 l*



MEDIUM

Mod. 145 x 210
Closed h: cm 30
Open h: cm 150
Weight: about 57 kg
Volume: about 220 l*



LARGE

Mod. 160 x 215
Closed h: cm 30
Open h: cm 150
Weight: about 64 kg
Volume: about 260 l*

- Art. CVG/01 - Columbus Variant Gray Small
- Art. CVS/01 - Columbus Variant Safari Small
- Art. CVW/01 - Columbus Variant Wild Green Small
- Art. CVG/02 - Columbus Variant Gray Medium
- Art. CVS/02 - Columbus Variant Safari Medium
- Art. CVW/02 - Columbus Variant Wild Green Medium
- Art. CVG/03 - Columbus Variant Gray Large
- Art. CVS/03 - Columbus Variant Safari Large
- Art. CVW/03 - Columbus Variant Wild Green Large

Includes: 4 universal clamps for attachment to roof bars, configuration for the attachment of auxiliary bars on outer shell, 2 doors/windows with mosquito-netting, soundproof and anti-condensation roof insulation, stowage net, 1 mattress and 2-3-4 pillows, interior light, 1 height adjustable alloy ladder, full opening on the back with graduated darkening, outer door with Crystal window, elastic cord for secure rear door closure, anti-condensation Air Cap, ladder storage bag, elastic straps assist in folding the fabric when closing.

Optional X-Long for Small and Medium: instead of the standard 210 cm long, this version is available at 230 cm in length. The X-Long version is suitable for longer length cars, camper vans, RV's and 4x4's.
Weight: Small about 57 kg - Volume: about 210 l*
Weight: Medium about 62 kg - Volume: about 235 l*



SMALL

Mod. 130 x 210
Closed h: cm 30
Open h: cm 150
Weight: about 42 kg
Volume: about 196 l*

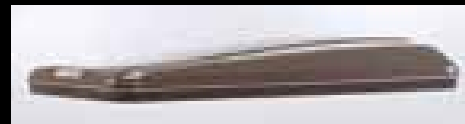


MEDIUM

Mod. 145 x 210
Closed h: cm 30
Open h: cm 150
Weight: about 47 kg
Volume: about 220 l*

- Art. CCF/01 - Columbus Carbon Fiber Small
- Art. CCF/02 - Columbus Carbon Fiber Medium

Includes: carbon fiber shells, 4 universal clamps for attachment to roof bars, 2 doors/windows with mosquito-netting, soundproof and anti-condensation roof insulation, stowage net, 1 mattress and 2-3 pillows, interior light, 1 height adjustable alloy ladder, full opening on the back with graduated darkening, outer door with Crystal window, anti-condensation Air Cap, ladder storage bag, elastic straps assist in folding the fabric when closing.



AIR-CAMPING

OVERLAND

OVERZONE



SMALL

Closed: 130 x 110 x h 30
Open: 130 x 220 x h 125
Weight: about 45 kg

- Art. AC/01 Air - Camping Small
- Art. AC/02 Air - Camping Medium
- Art. AC/03 Air - Camping Large

Includes: 4 Universal clamps for attachment to roof bars, 2 windows and 2 large doors all with mosquito-netting, 1 mattress and 2-3-4 pillows, 4 awning support poles (hold open doors to create awnings) 1 PVC travel cover, 1 height adjustable alloy ladder.
Standard: all models are configured for side (standard) opening.
Optional: Explorer opening (Small and Medium models only) for opening over rear (or front) of vehicles.



MEDIUM

Closed: 160 x 110 x h 30
Open: 160 x 220 x h 125
Weight: about 54 kg



LARGE

Closed: 180 x 110 x h 30
Open: 180 x 220 x h 125
Weight: about 65 kg



SMALL

Closed: 130 x 110 x h 30
Open: 130 x 220 x h 125
Weight: about 45 kg

- Art. OLC/01 - Overland Carbon Small
- Art. OLBX/01 - Overland Bordeaux Small
- Art. OLS/01 - Overland Safari Small
- Art. OLC/02 - Overland Carbon Medium
- Art. OLBX/02 - Overland Bordeaux Medium
- Art. OLS/02 - Overland Safari Medium
- Art. OLC/03 - Overland Carbon Large
- Art. OLBX/03 - Overland Bordeaux Large
- Art. OLS/03 - Overland Safari Large

Includes: 4 Universal clamps for attachment to roof bars, 2 windows and 2 large doors all with mosquito-netting, 1 mattress and 2-3-4 pillows, 4 awning support poles (hold open doors to create awnings) 1 PVC travel cover, 1 height adjustable alloy ladder.
Standard: all models are configured for side (standard) opening.
Optional: Explorer opening (Small and Medium models only) for opening over rear (or front) of vehicles.



MEDIUM

Closed: 160 x 110 x h 30
Open: 160 x 220 x h 125
Weight: about 54 kg



LARGE

Closed: 180 x 110 x h 30
Open: 180 x 220 x h 125
Weight: about 65 kg



SMALL

Closed: 130 x 110 x h 30
Open: 130 x 220
+ 70 (appendix) x h 125
Weight: about 48 kg

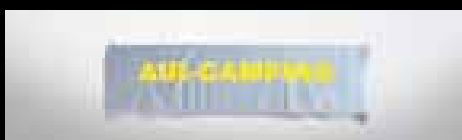
- Art. OZ/01 - Overzone Small
- Art. OZ/02 - Overzone Medium

Includes: 4 universal clamps to fixing onto roof-bars, two triangular windows with mosquito nets, two large doors with mosquito netting, one mattress and 2/3 pillows, 2 internal pockets, 2 adjustable stakes for unfolding additional outdoor area awning, 2 stakes to hold up back door and create awning, 1 PVC travel cover, the roof stakes are equipped with condensate proof covering, 2 windproof tightening ropes included in the tent's structure, multi-purpose hooks, the tent is pre-arranged for possible supplementary changing-room, 1 height adjustable alloy ladder.
Standard: all models are configured for side (standard) opening.
Optional: Explorer opening for opening over rear (or front) of vehicles.



MEDIUM

Closed: 160 x 110 x h 30
Open: 160 x 220
+ 70 (appendix) x h 125
Weight: about 57 kg



OVERCAMP



SMALL

Closed: 65 x 200 x h 30
Open: 130 x 200 x h 100
Weight: about 50 kg



MEDIUM

Closed: 90 x 200 x h 30
Open: 180 x 200 x h 115
Weight: about 54 kg

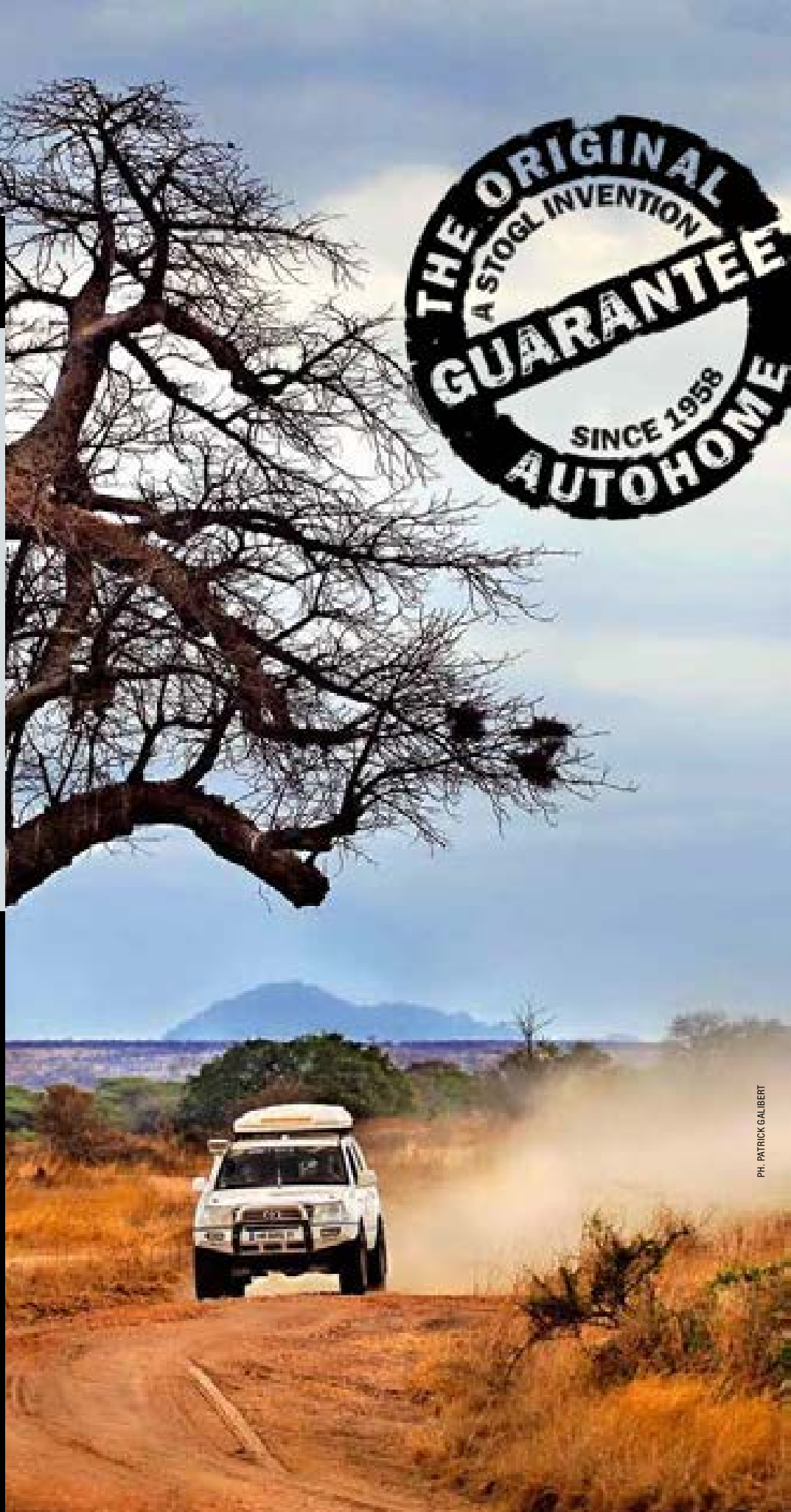
Art. OGV/01 - Overcamp Gray Small

Art. OGV/02 - Overcamp Gray Medium

Includes: 4 universal clamps for attachment to roof bars, 2 windows and 2 large doors all with mosquito-netting, 1 mattress and 2-4 pillows, 2 awning support poles, (hold open doors to create awning)
1 PVC travel cover, 1 height adjustable steel ladder.

DOUBLE UP SYSTEM

The coupling can be made with the following: Small+Small, Small+Medium, Medium+Medium on large vehicles.



PH. PATRICK GALIBERT


The tents used the world over by Tour Leaders and Explorers, for extreme car rallies and expeditions, are identical to the standard production: the same product anybody can buy.

WORLD LEADERS
IN OFF-ROAD
EQUIPMENT

AUTOHOME®

WORLD LEADERS IN ADVENTURE EQUIPMENT

www.autohome.it
e-mail: info@autohome.it

 Made in Italy

Distributed by:

GB

The indications of this catalogue are not binding and have no contractual value. The manufacturer reserves the right to make technical, constructive and aesthetic modifications on the products without prior notification. All the technical data, colours, weights and measurements are indicative only. All roof tents are hand built and therefore weights may vary slightly. If you need more details, please, contact an authorized reseller or the Manufacturer, also see our General Instructions for Use, Maintenance & Warranty, which are an integral part of the product. The catalogue is printed in Italy and it cannot be reproduced without prior authorisation of the manufacturer. Any dispute will be dealt with only by the Court in Mantova, Italy.

© Zifer Italia S.r.l. - Any reproduction or partial reproduction is strictly forbidden without the written consent of Zifer Italia S.r.l. - Viale Risorgimento, 23 - 46017 Rivarolo Mantovano (MN) - Italy. Any infringement of intellectual property rights will lead to legal action which may result in prosecution.

PRINTED IN ITALY - JULY 2012



AUTOHOME QUALITY CERTIFIED